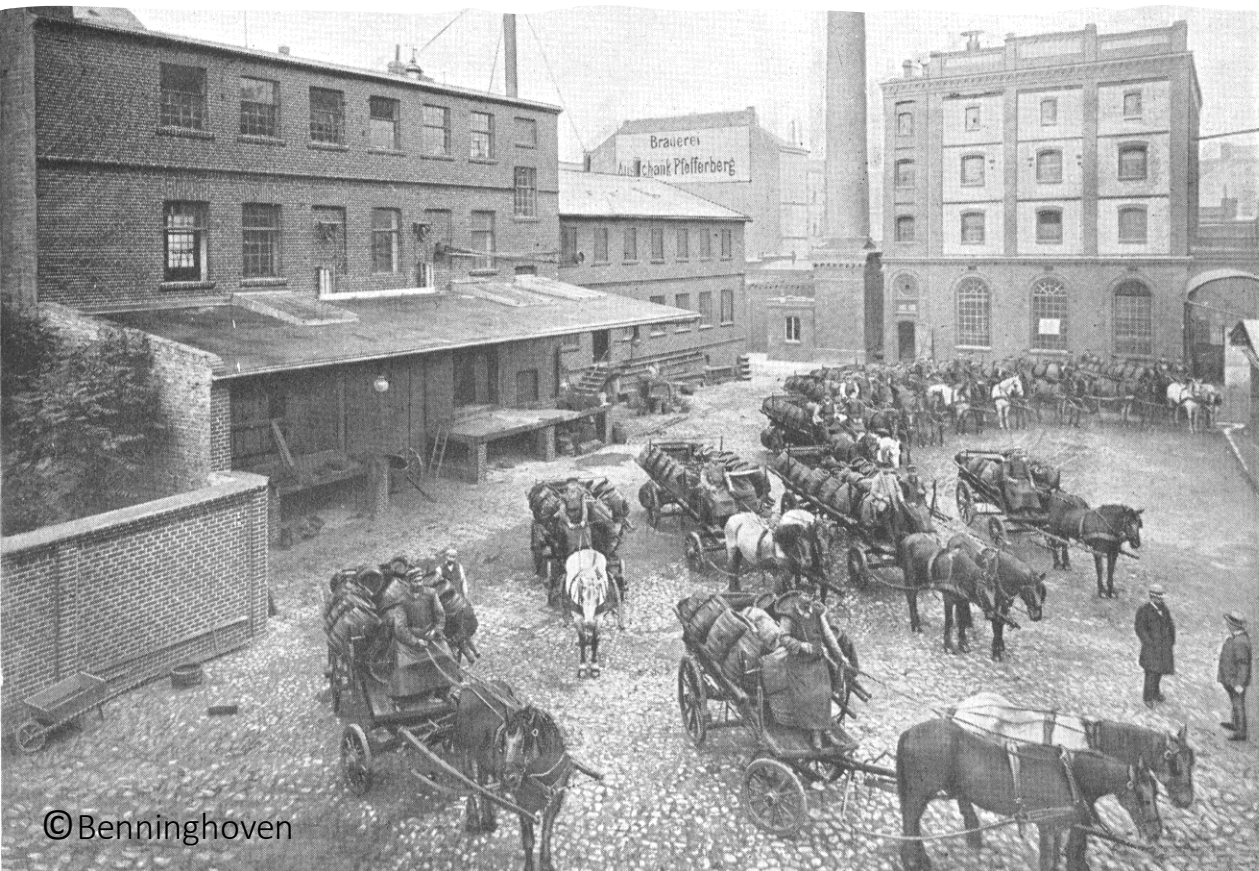
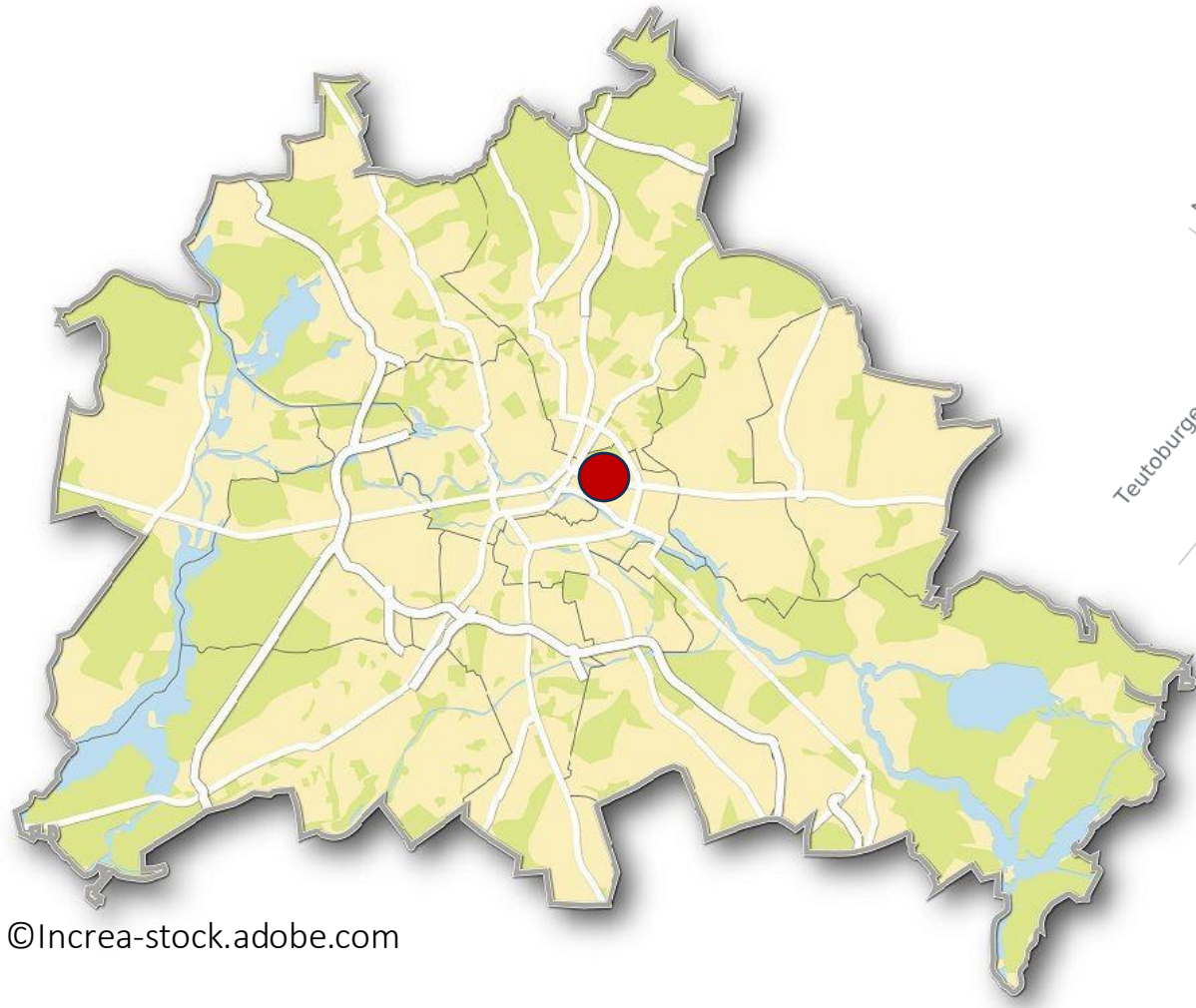


The Pfefferberg

Industrial monument meets Commitment



centrally located in the eastern city center



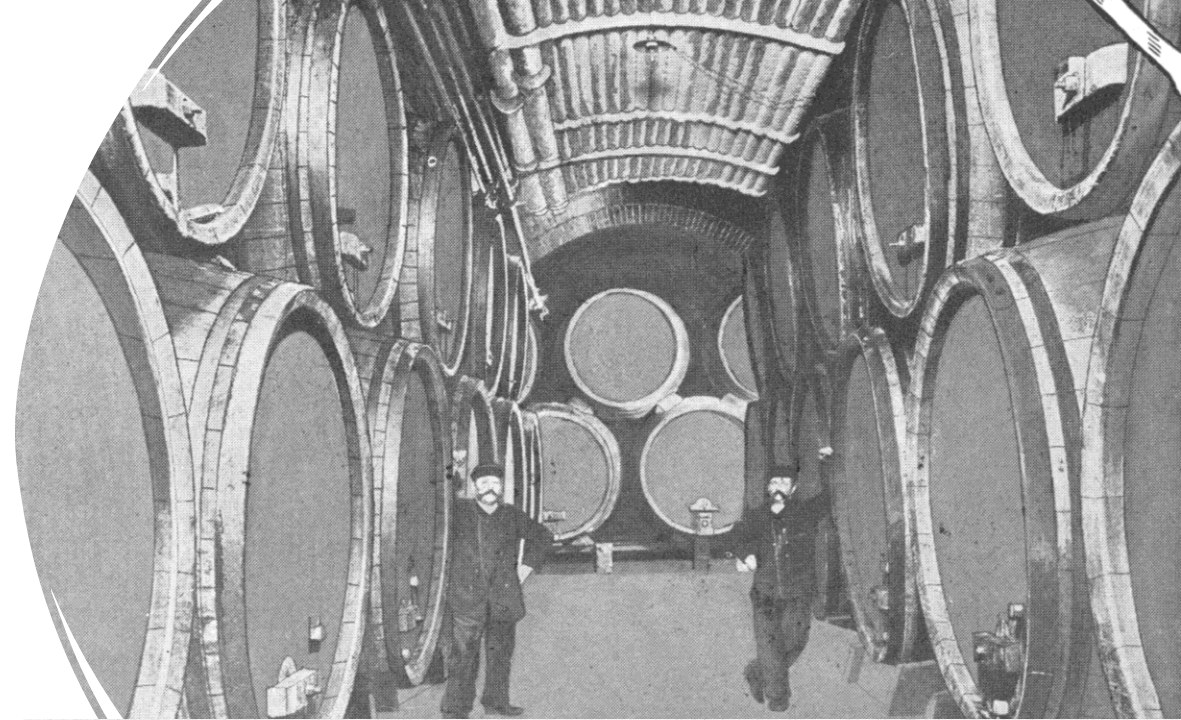
©Increa-stock.adobe.com



Brewery

1841-1921

- Founded by Joseph Pfeffer
- New technologies and growing sales led to frequent rebuilding
- "Pfefferberg" remained



Chocolate & Bread

1922-1945

- Hoffmann chocolate factory
- From 1934 a modern bakery





Printing & Publishing 1946 -1973

- Printing house Neues Deutschland
- Newspapers, artbooks, magazines, school books
- the GDR became the new owner of the property

Mixed use from 1973

- Vocational training facilities
- Polyclinic
- Offices, storage facilities, garages



©Klaus Michalek

Idea of the culture factory

- Originates from a 1988 study commissioned by the city of Berlin
- Mixture of culture and small commerce





The 1990s

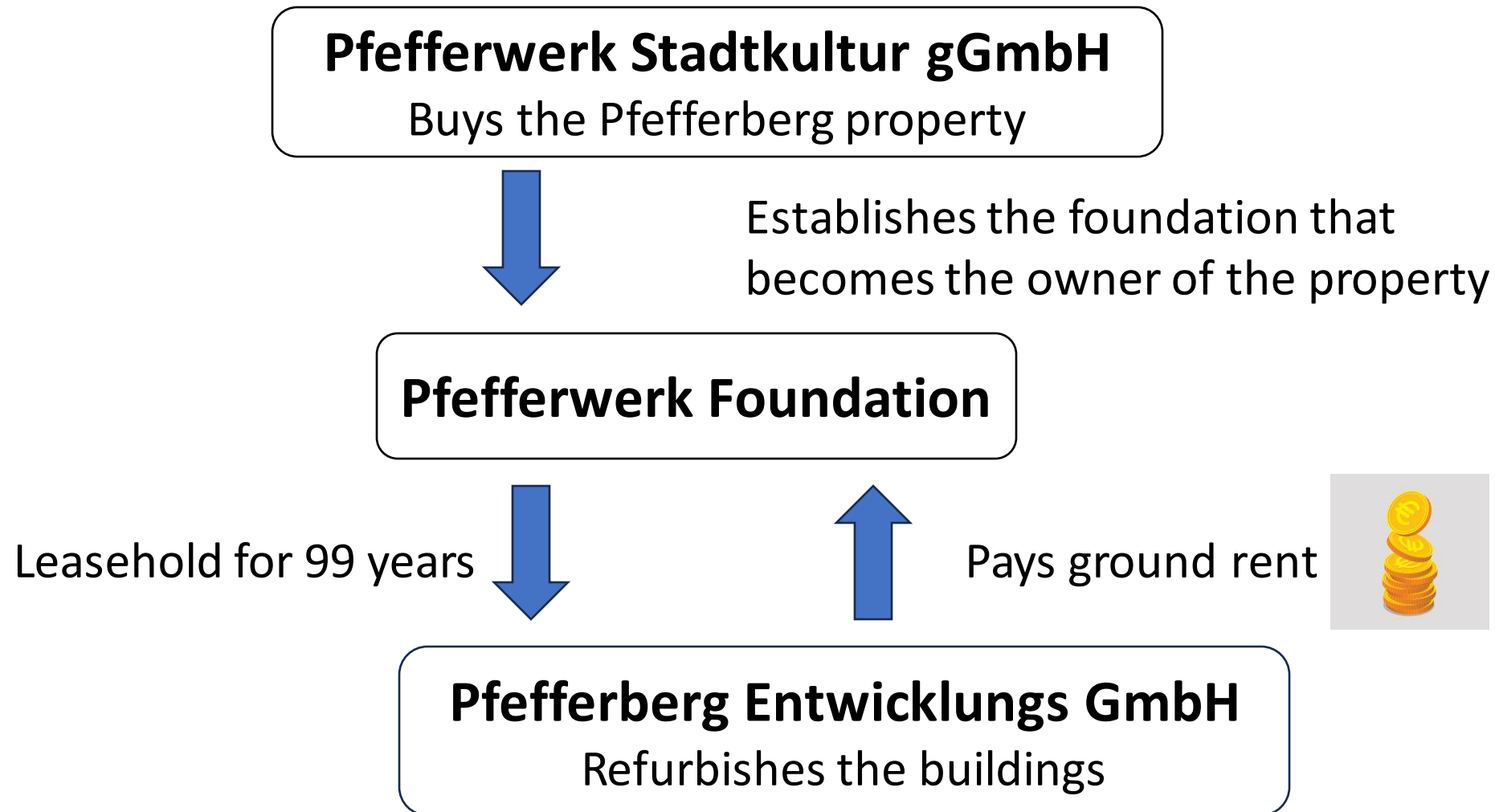
- Local people with participatory approach
- Diverse social, cultural, and political activities
- nationwide recognition
- Focus on long-term use of the site



1999: Purchase of the property with conditions

1. Establishing a non-profit foundation
2. Strict concept of use

New beginning: A new structure



Pfefferberg Today



14 Leaseholder/ Teilerbbauberechtigte



Leasehold for 99 years

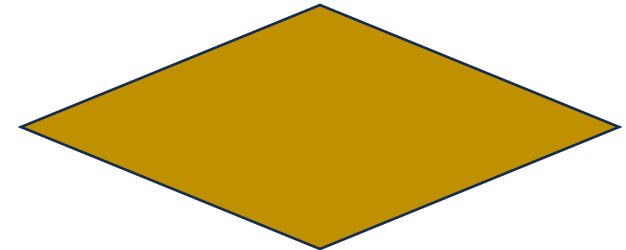


Pay monthly interest



Stiftung Pfefferwerk

Pfefferwerk Foundation



What is the impact of Pfefferberg?

Part 1: The leaseholders

- Renowned artists
- Architecture
- Hostel, Theater, Galleries
Beergarden, Restaurants
- Social enterprises



Example Pfefferwerk Stadtkultur gGmbH

- Independent provider of child and youth welfare
- Pfefferberg: training focus on socially disadvantaged young people



Example

VIA gGmbH

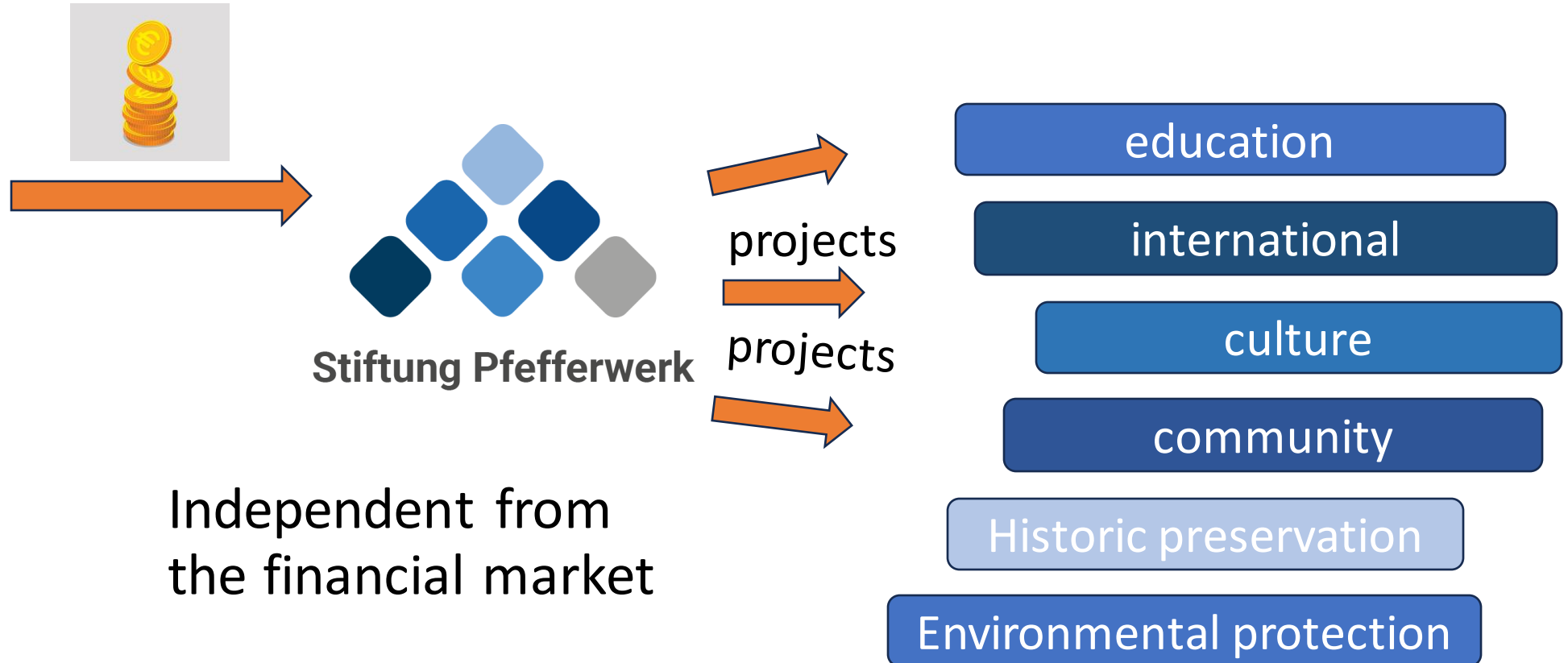
- Non-profit institution with facilities throughout Berlin
- Inclusive company for people with and without disabilities



What is the impact of Pfefferberg?

Part 2: The foundation

main goal: Improving the chances of disadvantaged people to enter working life



Supported project Buckow Blockpark 447



Supported project Students help students



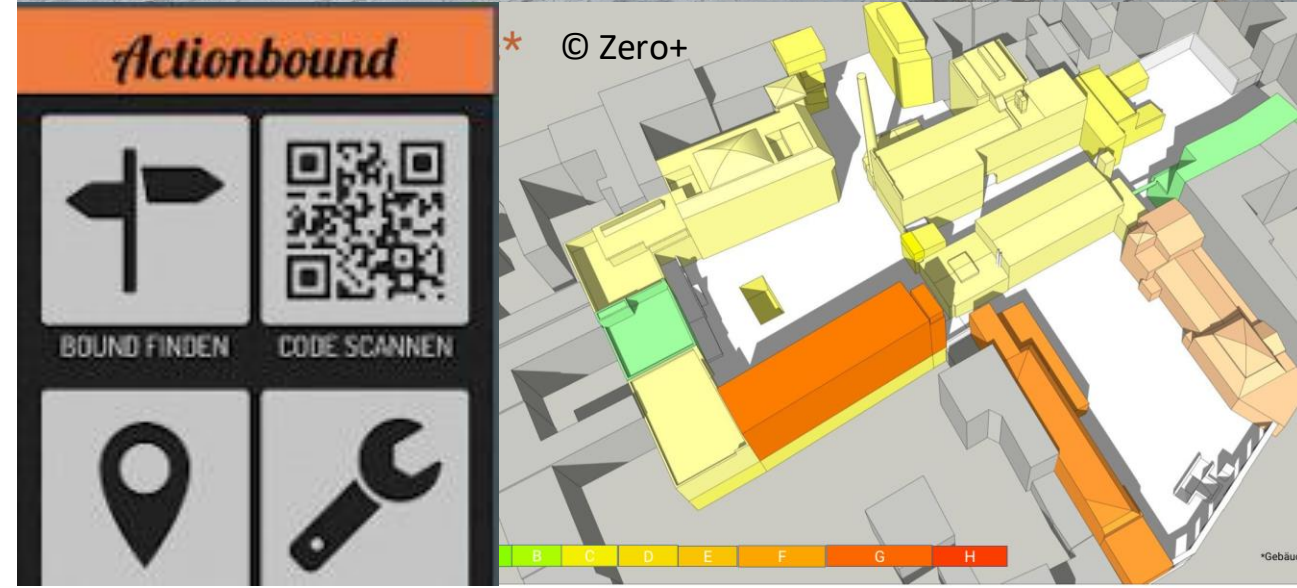


Possible Challenges

- Preservation of the concept of use
- Decision-making by the community of leaseholders

Plans for the future

- Pfefferberg climate neutral
- Making history visible
- Inclusive workshop/ atelier





Stiftung Pfefferwerk

www.stiftung-pfefferwerk.org

Anna Theil

(Management board)

theil@stiftung-pfefferwerk.org

