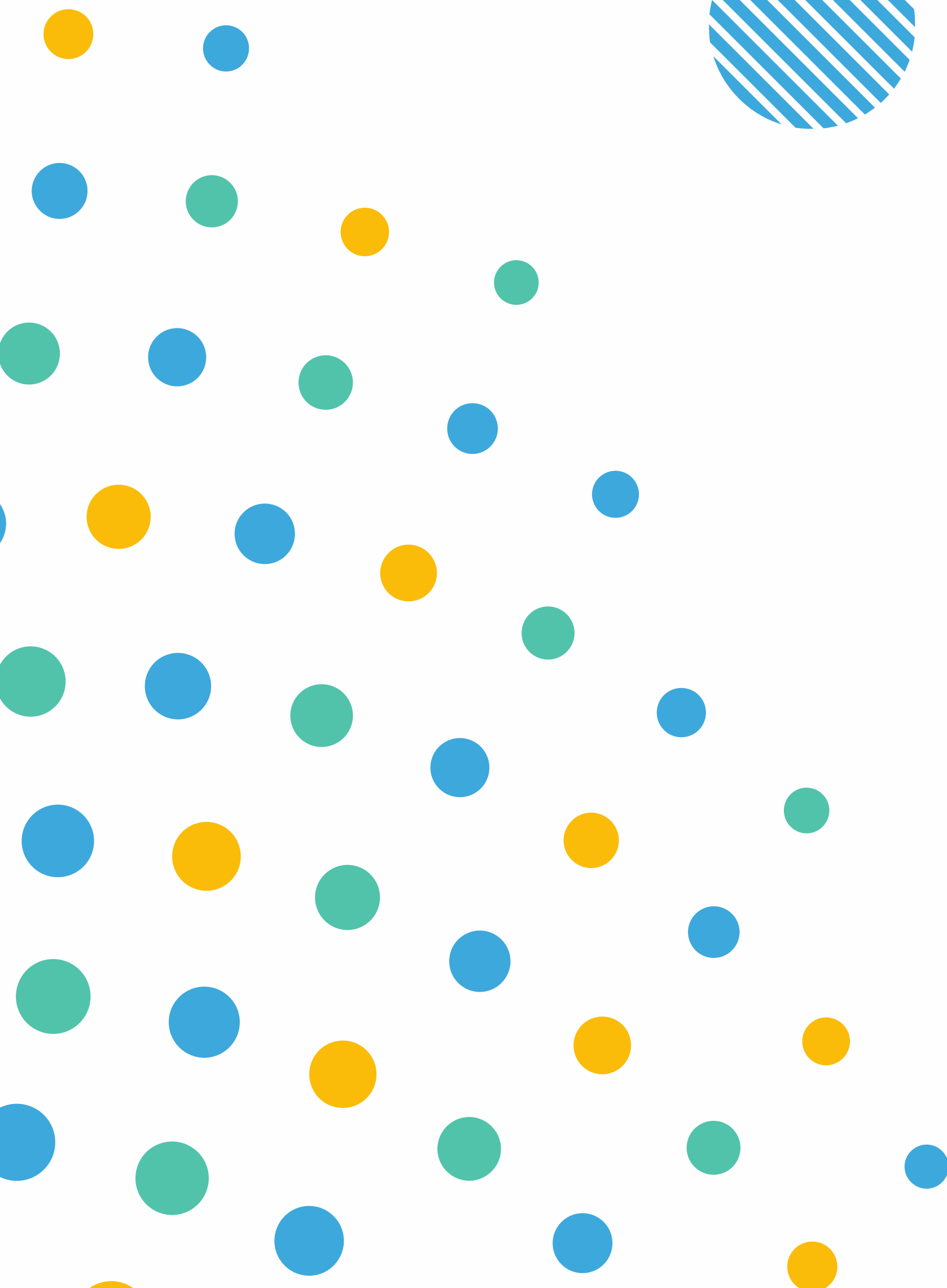


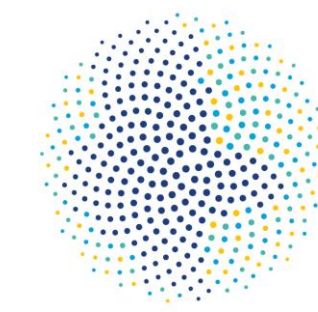
ERIH Conference 2023 Bilbao

New European Bauhaus Initiative in Saxony-Anhalt

supporting sustainable revitalization of industrial heritage

SUSTAINABLE – BEAUTIFUL – TOGETHER





NEB_NETWORKOFFICE
SAXONY-ANHALT

• Industrial development and heritage in Saxony-Anhalt

• Saxony-Anhalt THE BAUHAUS STATE

• NEW EUROPEAN BAUHAUS in Saxony-Anhalt

presented by

NEB_NETWORKOFFICE
Katrin Kanus-Sieber

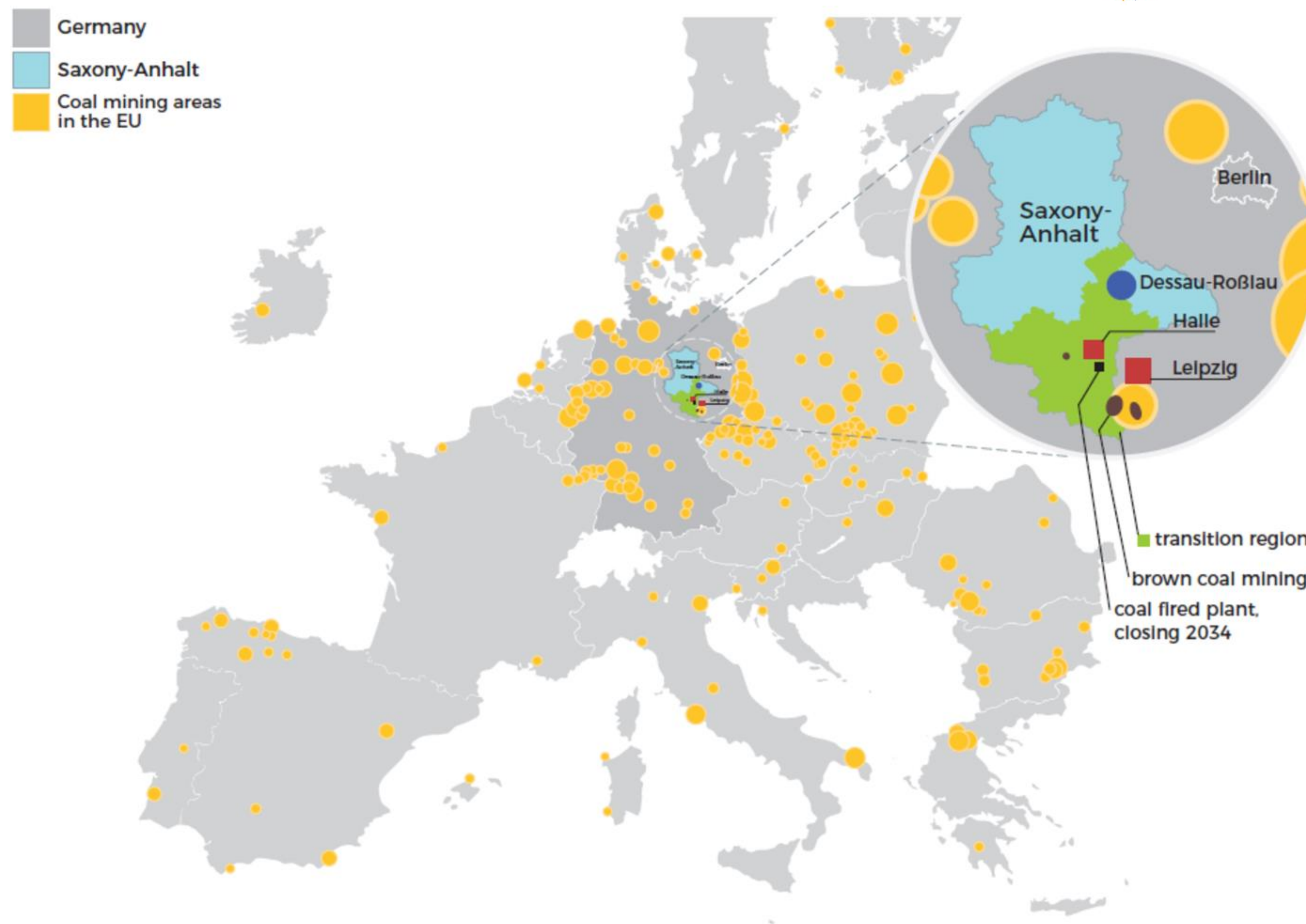
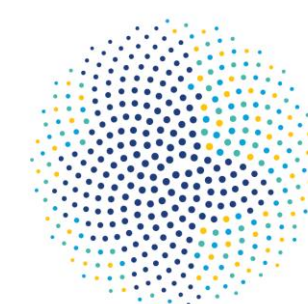
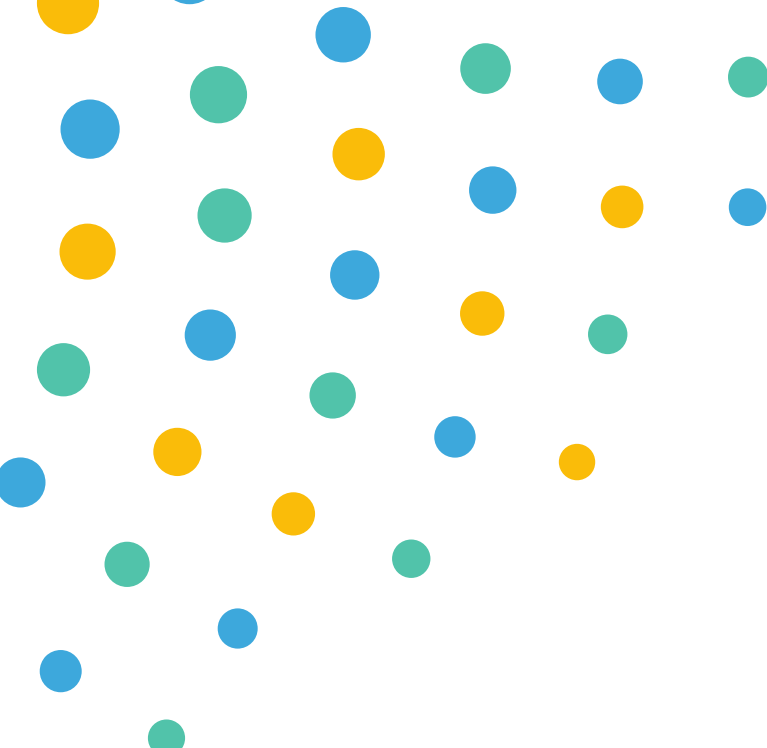
• County Burgenlandkreis nexts historical transformation

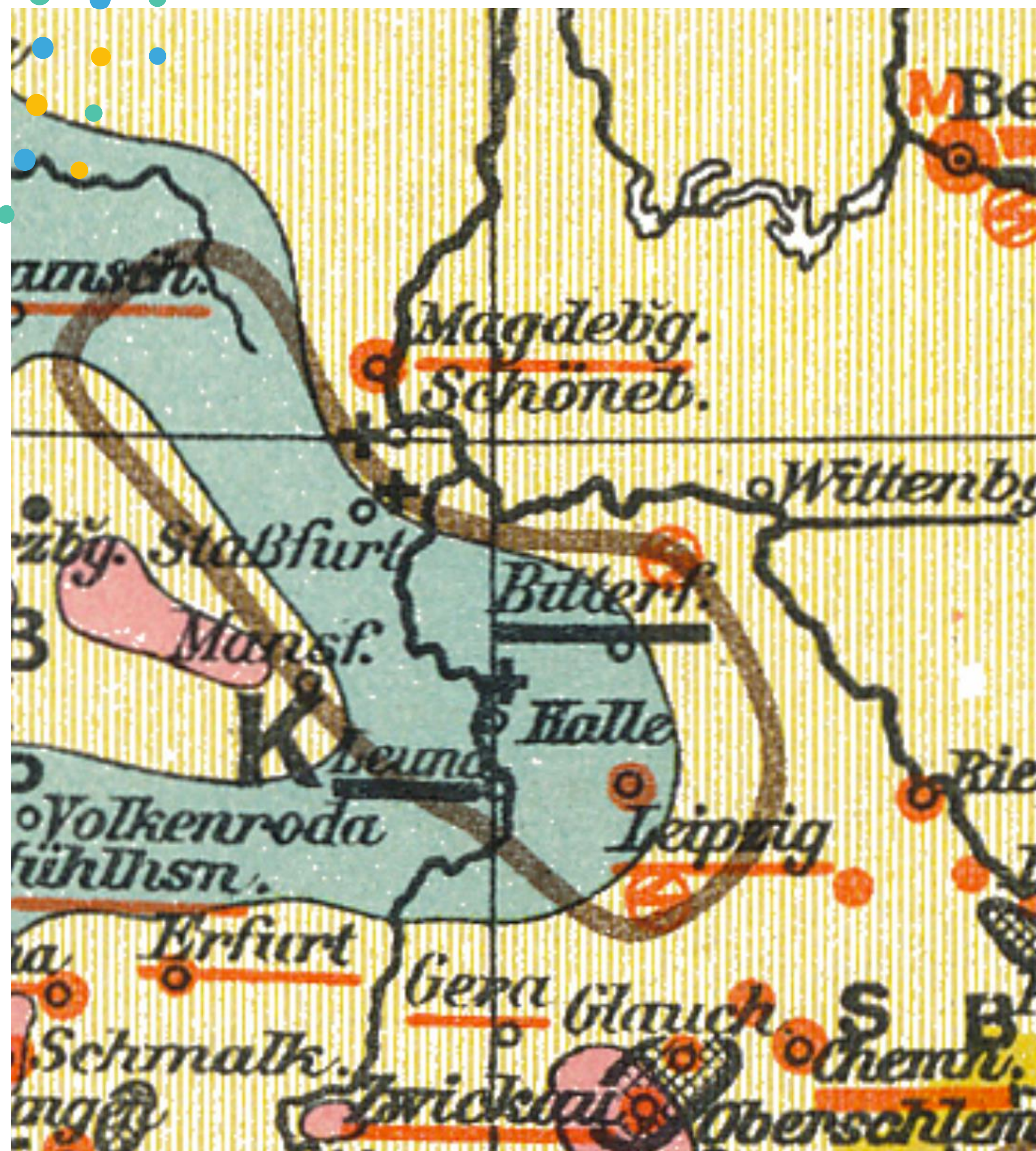
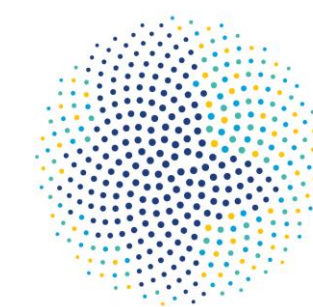
• Zeitz and its Industrial Heritage

• REAL WORLD LABORATORY for ZEKIWA

presented by

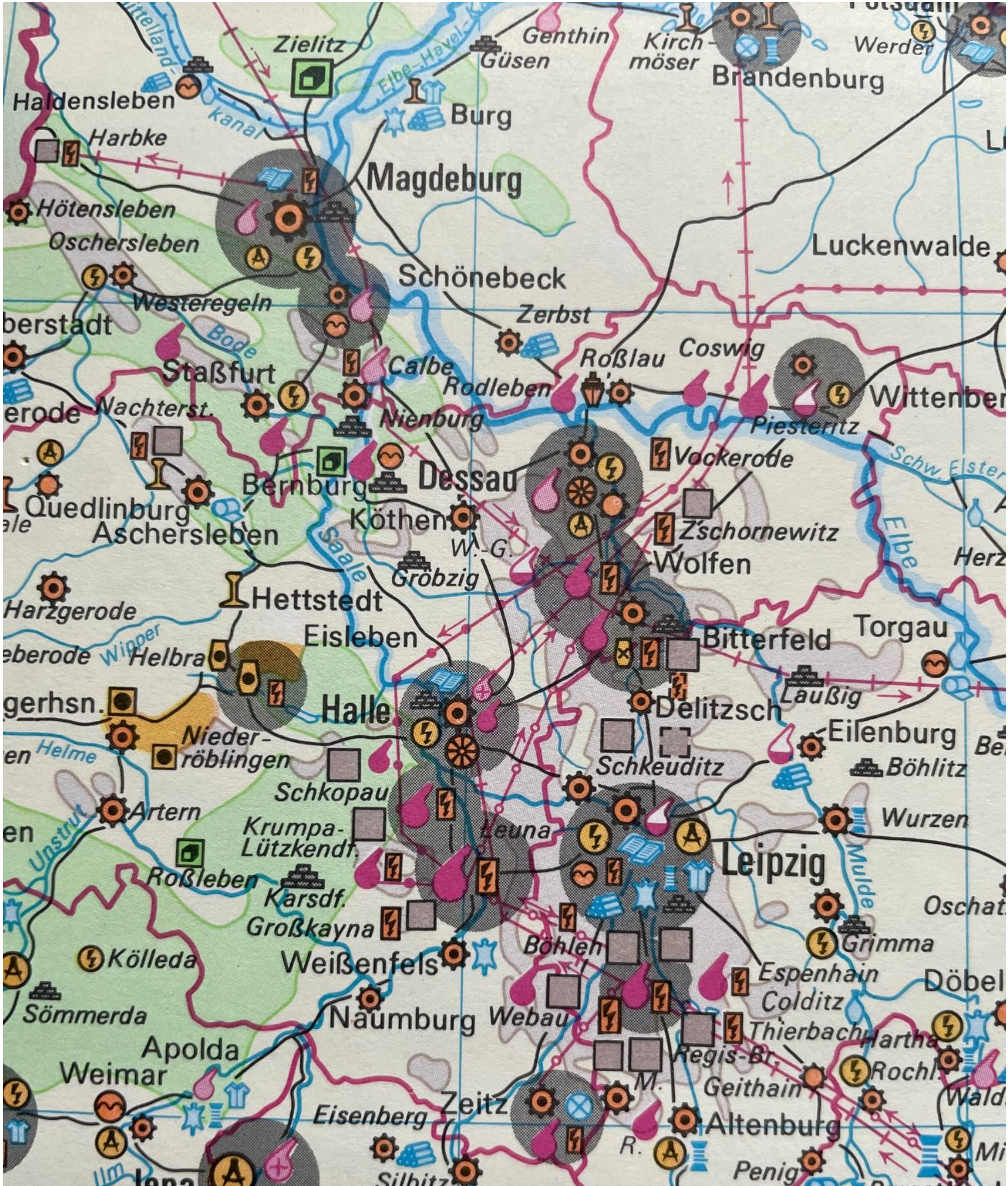
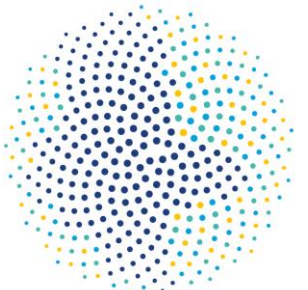
County Burgenlandkreis
Roman Mikaylov





Steinkohlen	Eisenindustrie
Braunkohlen lignite	Eisenindustrieorte Iron and steel industry
Kali-u. Steinsalzvorkommen potassium- and rock salt	Maschinenbau Mechanical industry
Salinen • Mineralquellen	Edelmetallwaren
Blei	Aluminium
Eisenerz	Chemische Industr. Chemical industry
Gold	Seeschiffbau
Kupfer copper	Seeschiffbau
Silber	Seeschiffbau
Nickel	Seeschiffbau
Petroleum	Seeschiffbau
Zink	Seeschiffbau
Uran	Seeschiffbau
	Seeschiffbau

Historical map of the region from the 1920's, showing raw material deposits and industrial hubs



Energie- und Brennstoffindustrie

- Steinkohlenvorkommen
- Steinkohlenindustrie
- Braunkohlenvorkommen
- Braunkohlenindustrie
- Förderung von Uranerz
- Erdöl-, erdgashöfliche Gebiete
- Förderung von Erdöl
- Förderung von Erdgas
- Förderung von Ölschiefer
- Wärmekraftwerk
- Kernkraftwerk
- Wasserkraftwerk

Chemische Industrie

- Kali- und Steinsalzvorkommen
- Kali- und Steinsalzindustrie
- Natron
- Phosphat (Phosphorit, Apatit)
- Salpeter
- Schwefel, Schwefelkies
- Chemische Industrie
- Anorganische und Organische Grundchemie, Erdölverarbeitung

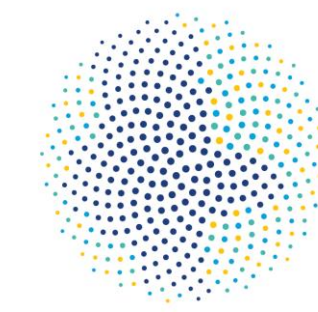
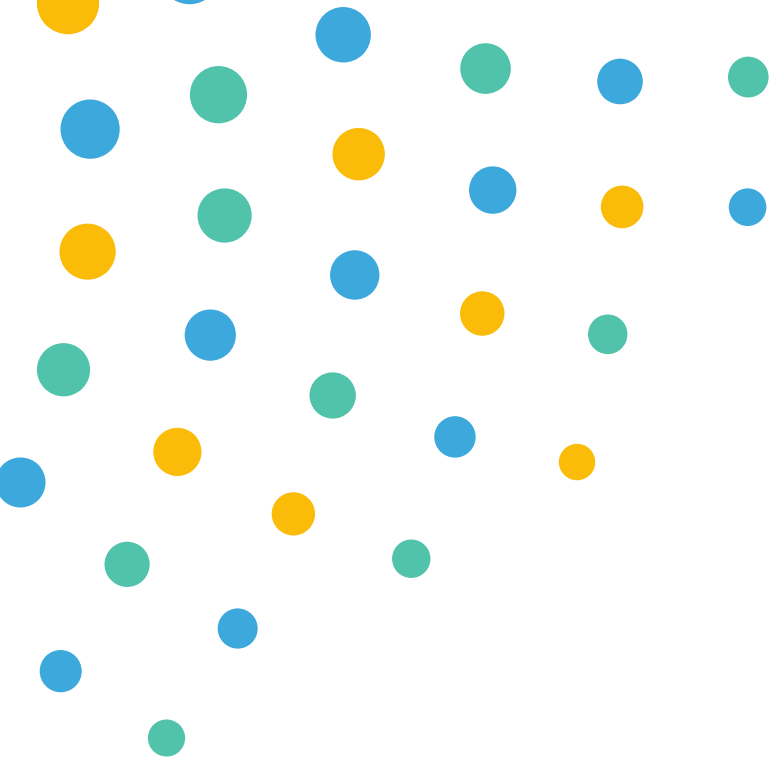
- Chemiefaser-, Plast- und Gummiindustrie
- Pharmazeutische Industrie
- Übrige Chemische Industrie

Metallurgie

- Schwarzmetallurgie
 - Förderung von Eisenerz
 - Eisenhütte
 - Stahlwerk, Walzwerk
- Nichteisenmetallurgie
 - Förderung von Erzen der Stahlveredler
 - Chromerz
 - Columbit (Niobit, Tantalit)
 - Kobalterz
 - Manganerz
 - Molybdänerz
 - Nickelerz
 - Titanerz (Ilmenit, Rutil)
 - Vanadinerz
 - Wolframerz
 - Verhüttung von Erzen der Stahlveredler
 - Nickelhütte

- Förderung von Erzen der Buntmetalle
 - Antimonerz
 - Bleierz
 - Blei- und Zinkerz
 - Kupfererz
 - Zinkerz
 - Zinnerz
- Verhüttung von Erzen der Buntmetalle
 - Bleihütte
 - Blei- und Zinkhütte
 - Kupferhütte
 - Zinkhütte
 - Zinnhütte
 - Buntmetallwalzwerk
- Förderung von Erzen der Leichtmetalle
 - Bauxit u. a. Aluminiumrohstoff
 - Magnesit
- Verhüttung von Erzen der Leichtmetalle
 - Tonerdewerk
 - Aluminiumhütte
- Förderung von Edelmetallen
 - Gold
 - Platin
 - Quecksilber, Zinnober
 - Silber

Historical map of the region from the 1980's, showing raw material deposits and industrial hubs

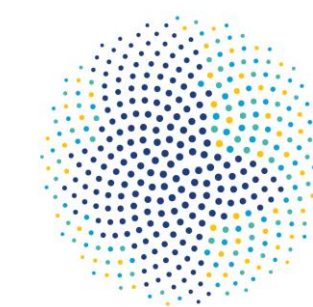


The 'side effects' of industrialization:

- Severe topographical and utilization transformations in vast landscapes (above ground lignite mining, potassium and stone salt mining heaps, growth in settlements and industrial areas, landuse sprawl)
- Local anchors of 150 years and more of history, collective memories, culture and every day 'industrial' life
- Severe environmental pollution

In 1990 an apocalyptic scenery of maltreated settlements, run down industrial plants, huge lignite mining holes and a heavily polluted natural environment.

INDUSTRIAL HERITAGE IN SAXONY_ANHALT



NEB_NETWORKOFFICE
SAXONY-ANHALT

Suche nach Stichpunkten

Alle Denkmäler

Museum / Ausstellung

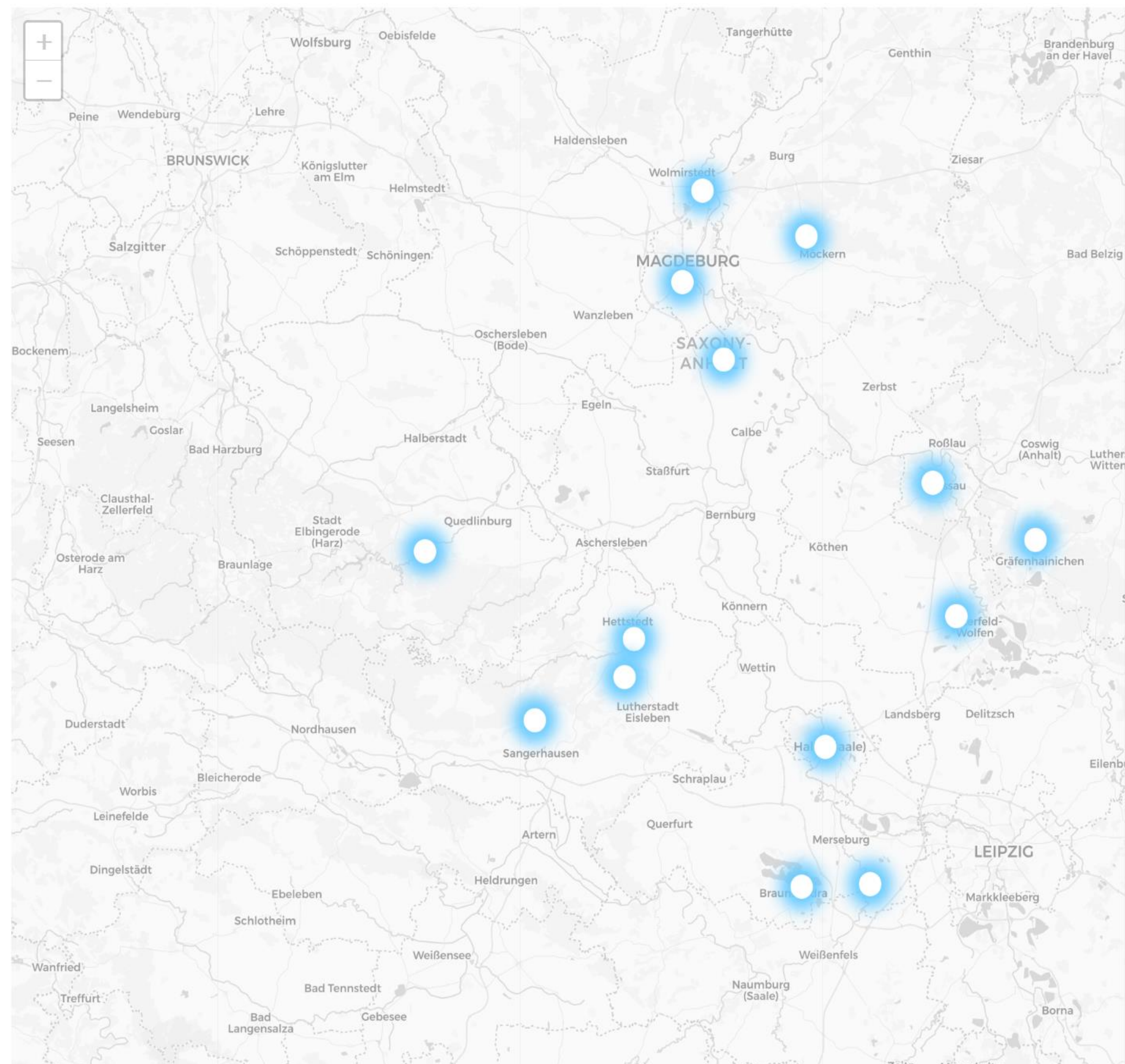
Regelmäßige Führungen

familienfreundlich

barrierefrei

Reisen für Alle

ERIH-Route



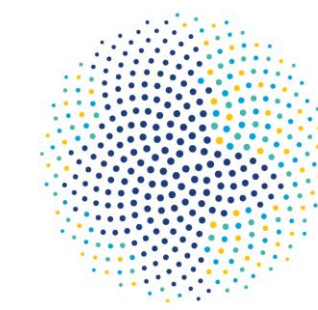
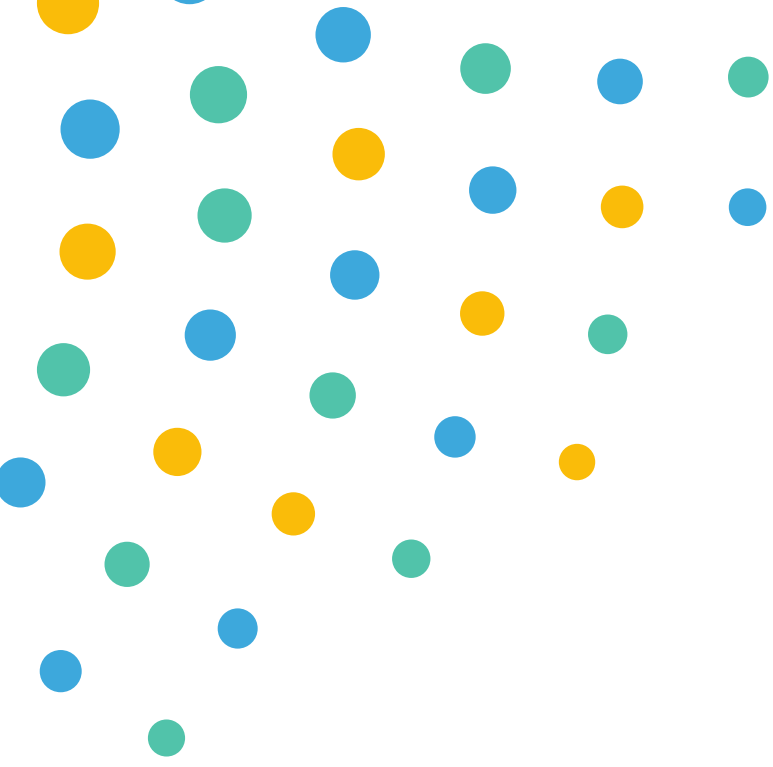
Saxony-Anhalt has about 36.000 listed heritage sites, buildings, archeological sites, monuments etc.

INDUSTRIAL HERITAGE in almost every town

listed buildings (factories, mining sites, powerplants, etc.)

listed workers settlements

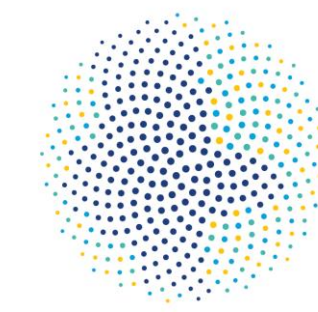
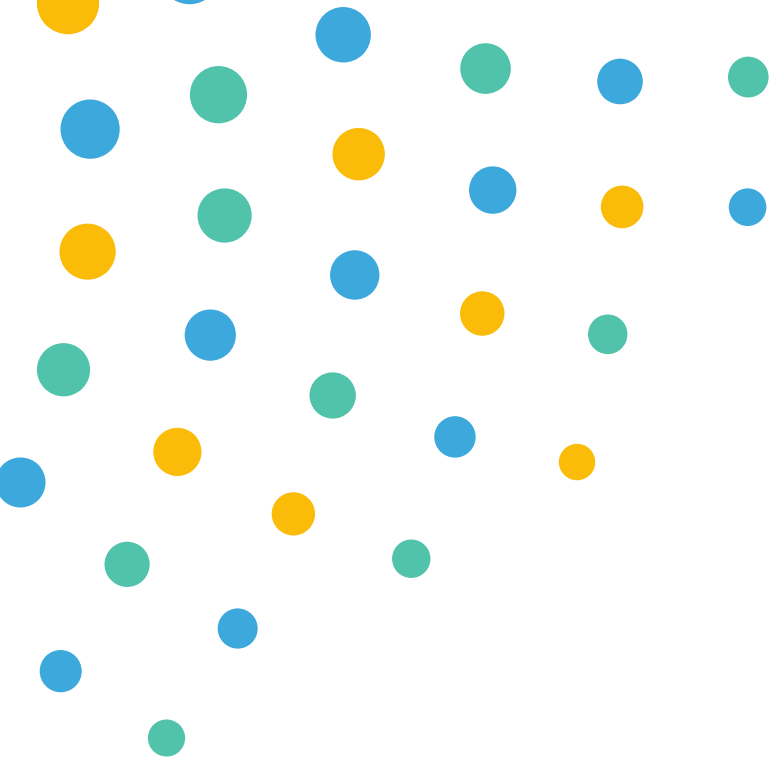
listed technical monuments



The 'side effects' of deindustrialisation:

- Workers migration lead to major vacancies in apartment buildings
- Abandoned local anchors of 150 years and more of history, collective memories, culture and every day life
- Feeling of devaluation within big parts of the remained population – hopelessness and collective depression, lack of experience in self-efficacy within a whole generation
- Small and large scale interventions and new developments within the society have gradually led to more courageous outlooks

After 22 years of transformation many attempts have been made and helped to gather a broad local experience in successful redevelopment and built up resilience.

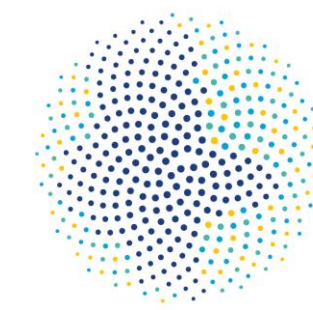


The hidden powers of industrial heritage:

- Often huge and therefore flexible abandoned spaces with strong structures and impressive aesthetic features
- Local anchors of 150 years and more of history, collective memories...
- Vast mining landscapes remodeled into natural and recreational areas
- Great potentials in sustainable reuse of existing buildings, rather than CO2 -costly new construction

It's time for 'radical' new thinking in addressing our contemporary chances and needs for (re)shaping our urban, built environment.

SAXONY-ANHALT THE BAUHAUS STATE



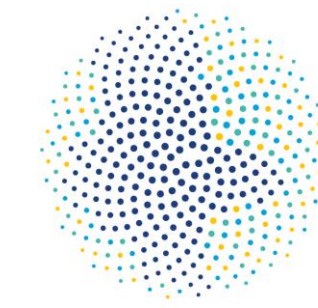
NEB_NETWORKOFFICE
SAXONY-ANHALT



THAN AND NOW:

Contemporary building practice was/ is neither integrating the full range of capacities in craftsmanship, industrial production, scientific progress and aesthetic expression, nor sufficiently serving today's requirements on holistically developing our built environment.

BAUHAUS IMPULSES SINCE 1989



NEB_NETWORKOFFICE
SAXONY-ANHALT

ERIH question: How can we make industrial heritage a sustainable social and economic engine in the regeneration of vulnerable neighbourhoods?

Industrial Gardenrealm 1989 – 2000 Healing and incorporating 150 years of industrial development

Harald Kegler on the Industrial Gardenrealm:

“The Bauhaus Dessau (and then the EXPO 2000) pursued a kind of reflexive modernization for a post-industrial, but not industry-free, ecological age, the core of which was the contestation of cultural identity.”¹

TOOLS:

RESEARCH

PILOT PROJECTS

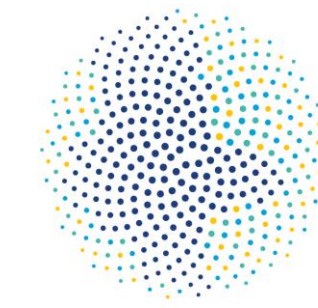
EXHIBITIONS

FESTIVALS

2



BAUHAUS IMPULSES SINCE 1989



NEB_NETWORKOFFICE
SAXONY-ANHALT

ERIH question: How can we involve citizens and communities in the protection, enhancement, promotion and use of their (industrial) heritage as a starting point for innovative future-oriented forms of culture, life and work?

IBA 2010 “Less is Future” 2002 – 2010 (Re)discovering local identities and intrinsic strength in shrinking cities

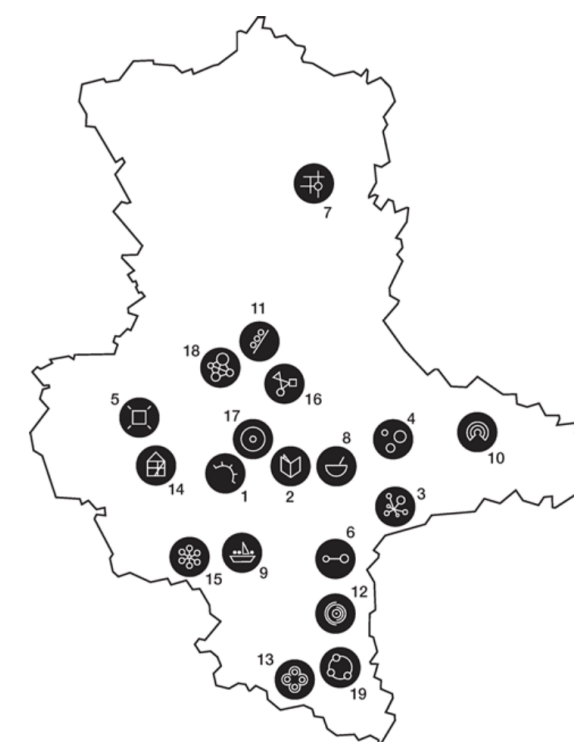
Iris Reuther on ‘An IBA without lighthouseprojects’:

“...in the IBA cities of Saxony-Anhalt, an iconography of the ephemeral, the cultural and the emotional, of what is available locally, of what can be afforded and used for the common good, is emerging. This list could be continued and increased. It names strategies, practices and prototypes in the use of space and in the design...”¹

TOOLS: RESEARCH



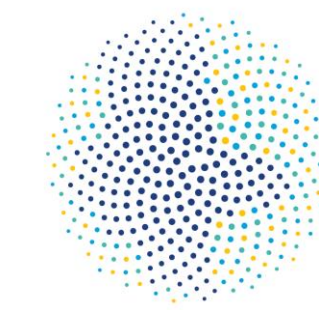
19 IBA CITIES – 19 SUBJECTS



ACTIVATION OF CIVIL ENGAGEMENT



NEW EUROPEAN BAUHAUS



NEB_NETWORKOFFICE
SAXONY-ANHALT

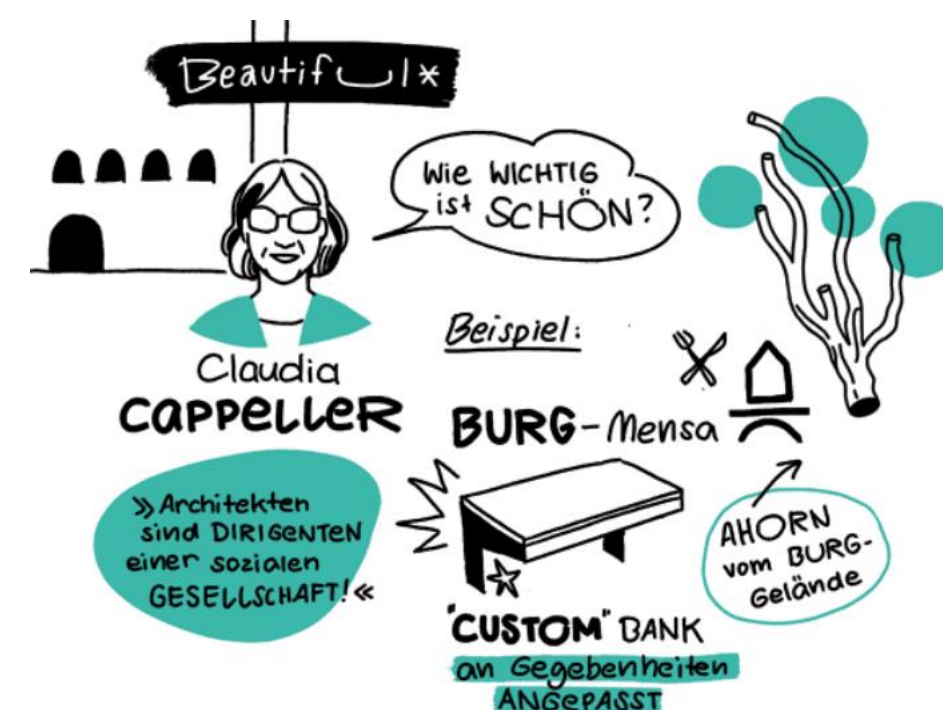
ERIH question: How can industrial heritage sites assume their responsibility as an actor and part of the European New Bauhaus? How can we find budgets for the activation and exploiting the potentials of industrial heritage?



NEW EUROPEAN BAUHAUS 2020 - (Re)setting standards in sustainability, aesthetics and co-development

Industrial heritage is a resource in material and nontangible aspects. Preservation and revitalization of industrial heritage serves, as showcased in many sites worldwide already, as a nucleus for thriving innovative and creative urban development, whilst reducing new landuse, building embodied carbon and construction material. Therefore the Saxony-Anhalt initiative for the NEW EUROPEAN BAUHAUS puts a major focus on it.

TOOLS: REAL WORLD LABORATORIES

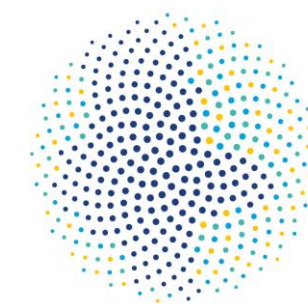
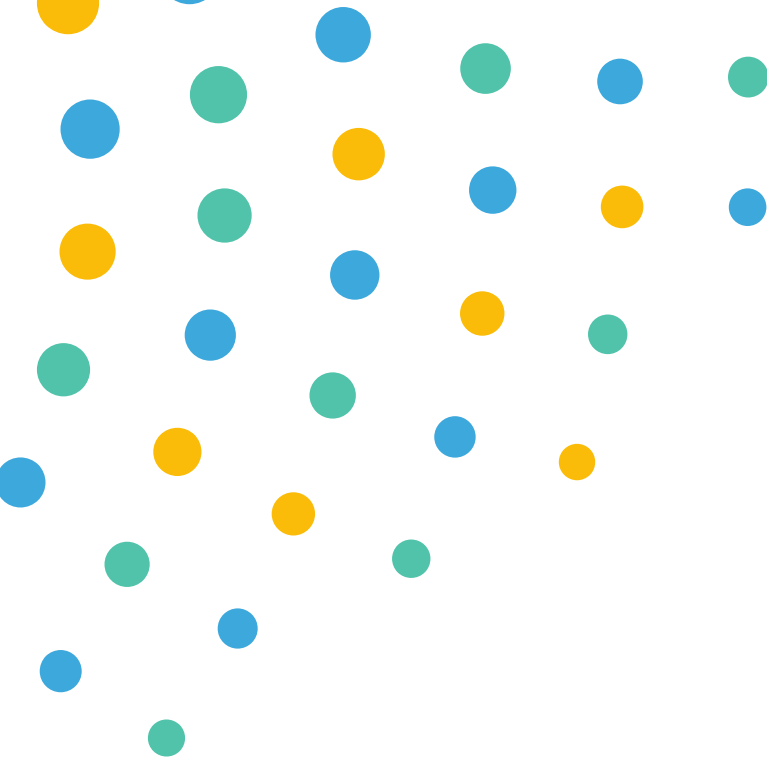


APPLIED PROJECTS

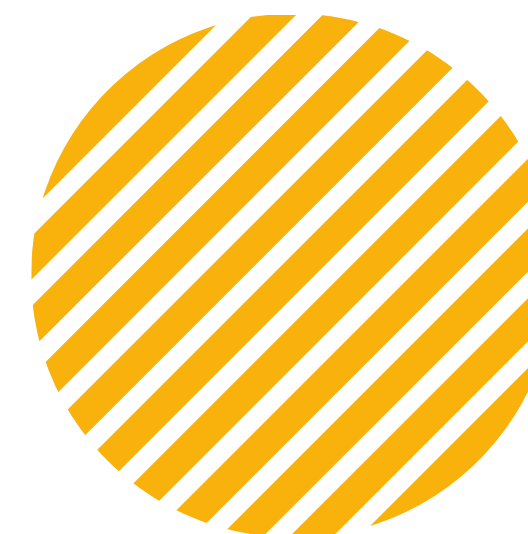
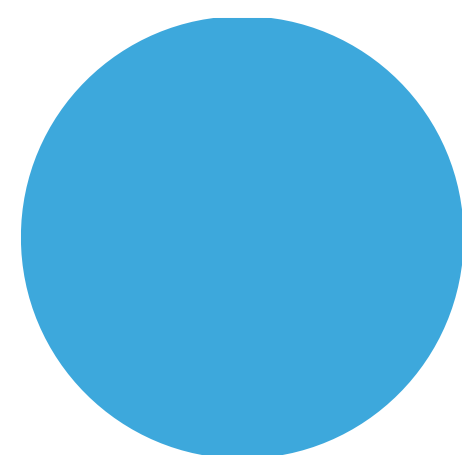
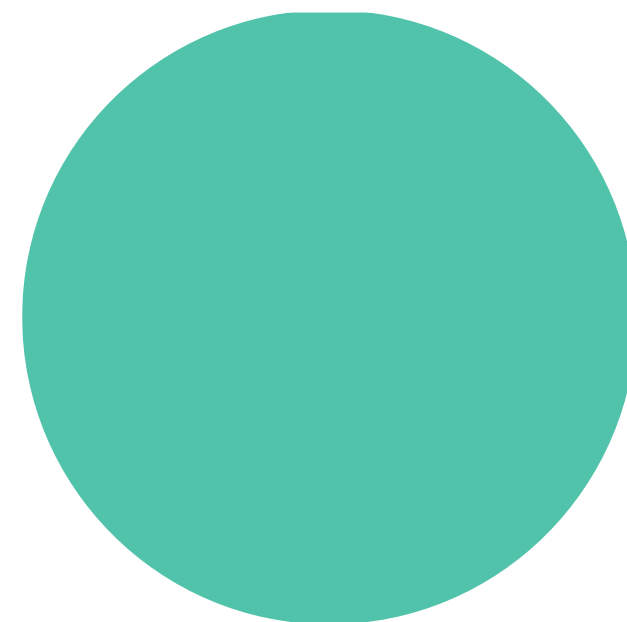


COLLABORATIVE PROCESSES





NEB_NETWORKOFFICE
SAXONY-ANHALT



Thank You

