

The background image shows a large industrial complex, likely a former steel mill or factory. It features massive, rusted metal structures, including a prominent overhead crane system with a long horizontal beam supported by vertical pillars. In the background, there are several multi-story brick buildings with numerous windows. The sky is overcast and grey. The overall scene conveys a sense of industrial scale and historical significance.

IK-CNCI

CENTRE NATIONAL DE LA CULTURE INDUSTRIELLE LUXEMBOURG

**INDUSTRIAL HERITAGE AS A DRIVING FORCE FOR
SUSTAINABLE SOCIAL AND ECONOMIC DEVELOPMENT**

INDUSTRIAL HERITAGE AS A DRIVING FORCE FOR SUSTAINABLE SOCIAL AND ECONOMIC DEVELOPMENT

ABOUT US

Industriekultur-CNCI is a non-profit organisation established in 2019 which is funded and supported by the Ministry of Culture.

We are a collaborative network which is pivotal to bringing enthusiasts and the key players in industrial culture together.

Our main goals are to:

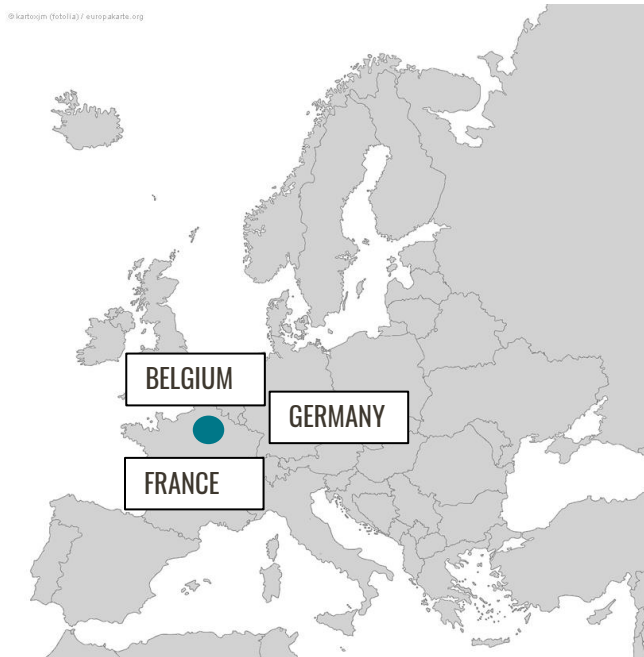
- Bring together the key players involved in industrial heritage.
- Develop, support and encourage creative re-use concepts.
- Raise awareness of industrial culture and heritage in all its components.



[IK-CNCI]

INDUSTRIAL HERITAGE AS A DRIVING FORCE FOR SUSTAINABLE SOCIAL AND ECONOMIC DEVELOPMENT

WE ARE LOCATED



Luxembourg is a small, multilingual, and multicultural country in Western Europe.

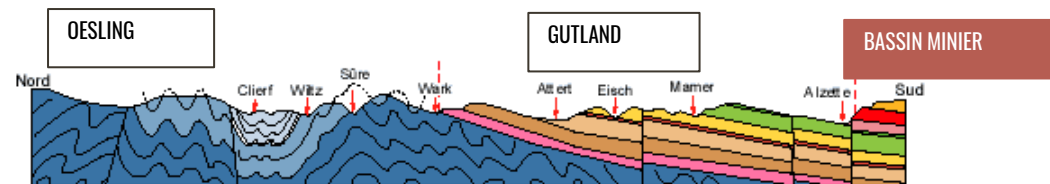
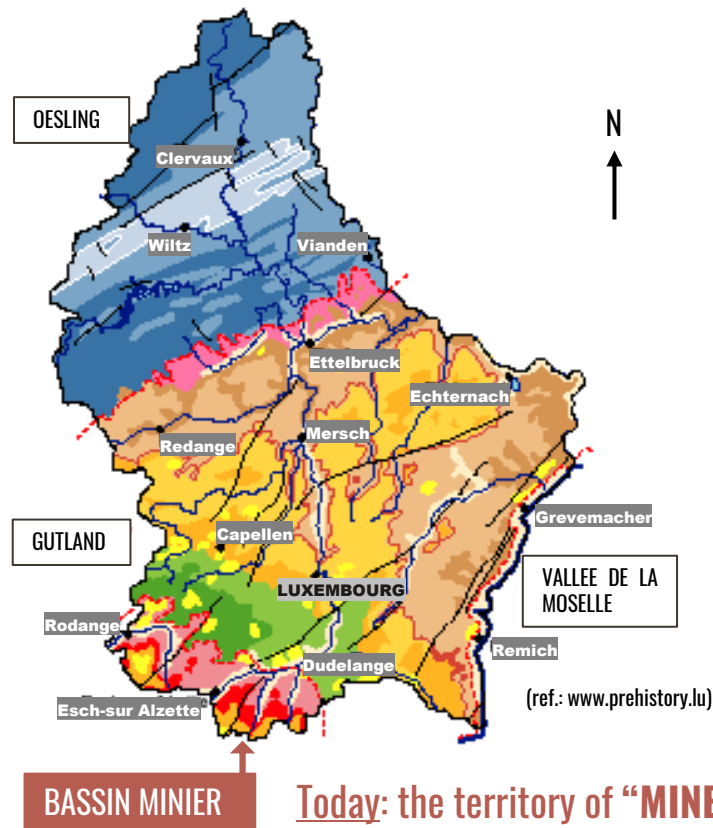
Between the mid-19th and the late 20th Century, the country's economy was intrinsically linked to the steel industry.

This resulted in economic growth reflecting on its society and landscape.

Luxembourg's industrial past becomes its heritage.

INDUSTRIAL HERITAGE AS A DRIVING FORCE FOR SUSTAINABLE SOCIAL AND ECONOMIC DEVELOPMENT

LUXEMBOURG NATURAL RESOURCES



A region with diversified and complementary natural resources.

The South needed a **global approach** to significantly improve its economic, social and environmental standing which was achieved by a **shared vision of the region**.

INDUSTRIAL HERITAGE AS A DRIVING FORCE FOR SUSTAINABLE SOCIAL AND ECONOMIC DEVELOPMENT

REGIONAL PLAN SUD

Several tools have been developed by the government to drive regional development:

1999

The law on regional planning encouraged municipalities to create intermunicipal associations.

2000

Luxembourg state jointly set up the development company **Agora** in 2000 with the steel group **Arbed** (today: ArcelorMittal).

2002

The **Fonds Belval** was created.

2003

Finally, the municipalities of the South joined forces in a municipal syndicate called **PRO-SUD**.



INDUSTRIAL HERITAGE AS A DRIVING FORCE FOR SUSTAINABLE SOCIAL AND ECONOMIC DEVELOPMENT

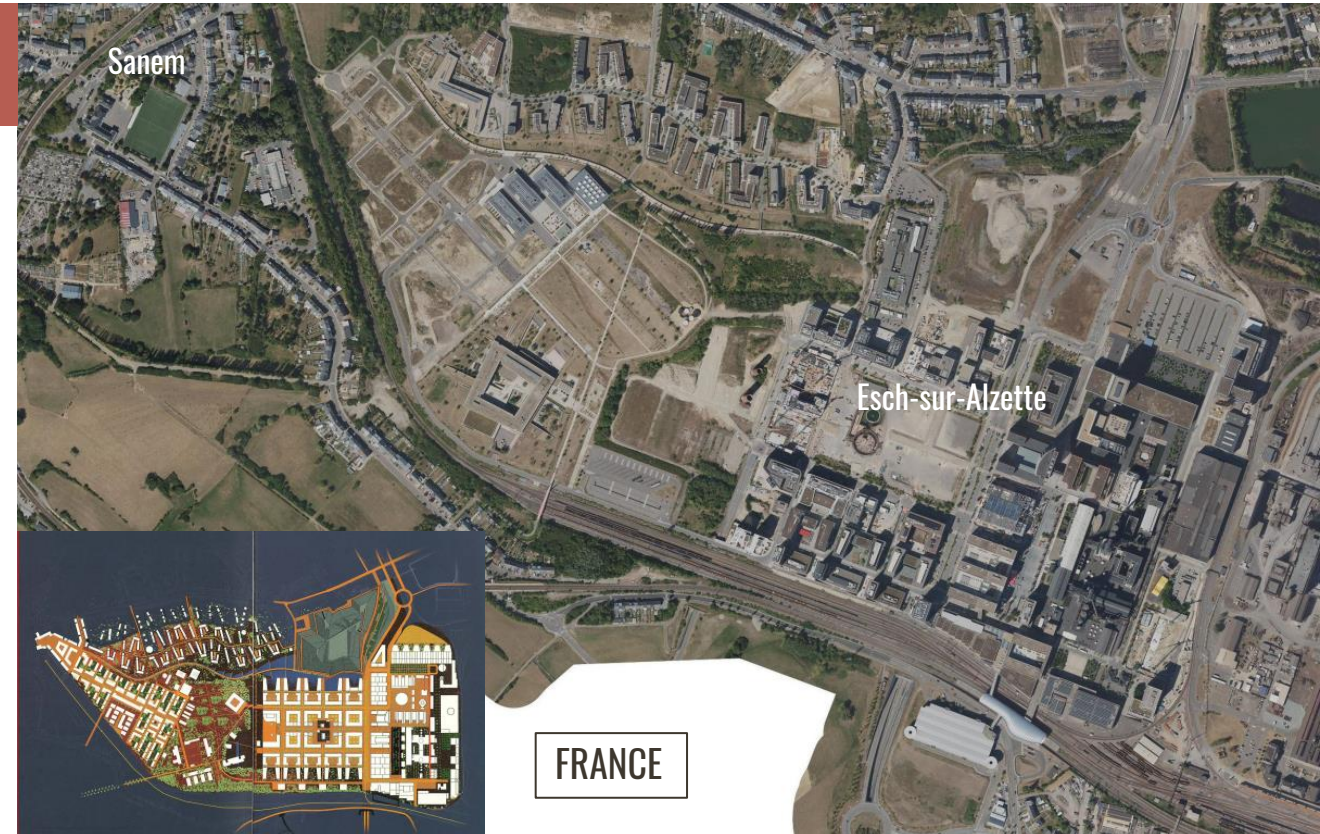
BELVAL

Covering 120 hectares, this is the first major urban project in Luxembourg to be developed in the context of industrial heritage.

The site of the former Arbed factory, which extends into the municipality of Esch-sur-Alzette and Sanem, is an industrial wasteland in **need of redevelopment**.

Luxembourg has implemented a national research and innovation strategy. The aim is to create a sustainable, diverse and digital knowledge-based society and build a better future, **following in the footsteps of its industrial heritage**.

The “Cité des Sciences” is a flagship project of the Government.



(ref.: géoportail @ Jo Coenen/Lübbes Freiraum/Rolo Fütterer - Belval-Ouest 2002)

INDUSTRIAL HERITAGE AS A DRIVING FORCE FOR SUSTAINABLE SOCIAL AND ECONOMIC DEVELOPMENT

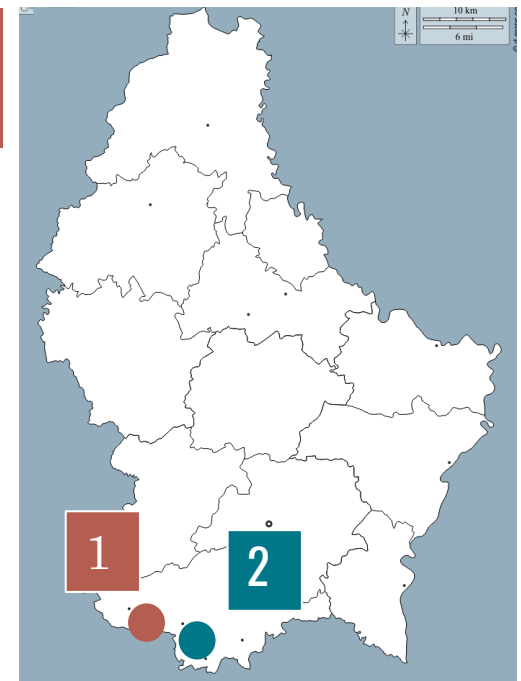
1 METZESCHMELZ

2 NEISCHMELZ

Luxembourg's current growth and the importance of land conservation, innovative and bold strategies are required to ensure the implementation of new urban expansions.

These projects, which are at different stages of urban development, illustrate the different innovative and sustainable approaches to the future development of industrial sites into new urban areas.

Thanks to private and public initiatives, some historic buildings have been preserved, used temporarily or will be integrated into the new urban areas in the future.



**Planned in the context of industrial heritage urban projects using the principles of the "New European Bauhaus" :
SUSTAINABLE / TOGETHER / BEAUTIFUL**

METZESCHMELZ

INDUSTRIAL HERITAGE AS A DRIVING FORCE FOR SUSTAINABLE SOCIAL AND ECONOMIC DEVELOPMENT

SITE

Revitalisation of the southern “MINETT” region

Since February **2016**, Agora has overseen the feasibility study for the development of the 63-hectare project.

The new Metzeschmelz will promote sustainability and future viability and meet the challenges of structural change with innovative concepts co-designed by citizens.

A sustainable project, focusing on heritage development, quality of public spaces, affordable housing, circular economy, mobility, environmental sustainability, and urban mix.



(ref.: géoportail)



ESCH/SCHIFFFLANGE

PAST

[IK-CNCI]

(ref.: @ Photothèque de la Ville d'Esch-sur-Alzette)

A former industrial site will be transformed into the future district “Metzeschmelz”

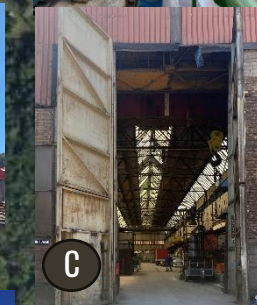
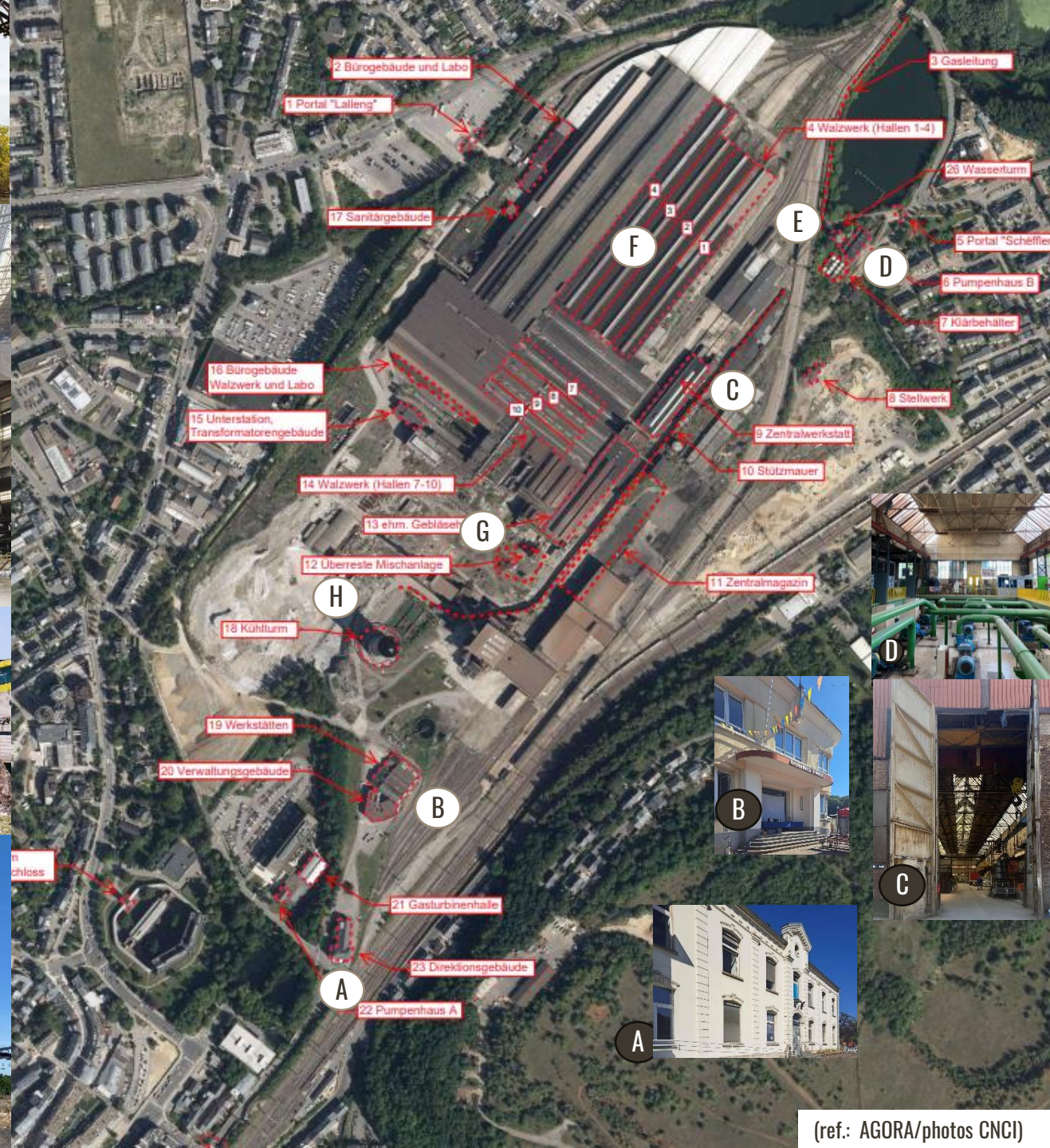
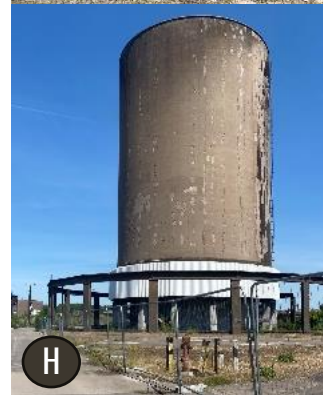
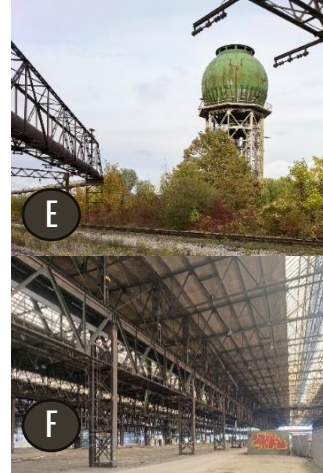
ESCH/SCHIFFFLANGE TODAY

PRESERVATION

More than 20 historical buildings and elements have been preserved.

The first project where an inventory of existing buildings was carried out in advance.

Not only individual, but entire building units that reflect the original context in which they were built and used.



MASTERPLAN

A well-connected and lively district close to the city between two municipalities.

The former factory site remains recognisable.
High quality public spaces are provided.

The City Factory concept also incorporates many principles of circular economy and sustainable development.

Citizens were involved in the urban planning process.



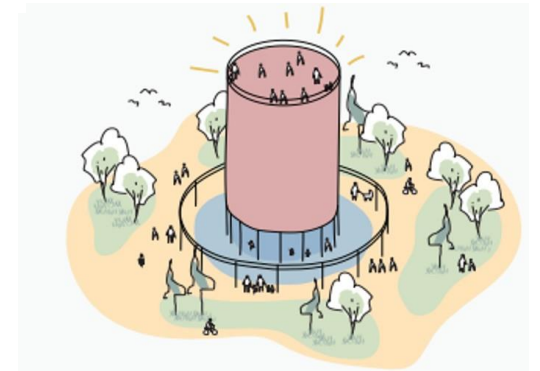
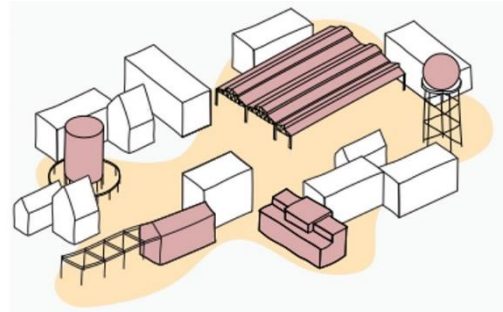
INDUSTRIAL HERITAGE AS A DRIVING FORCE FOR SUSTAINABLE SOCIAL AND ECONOMIC DEVELOPMENT

URBAN VISION

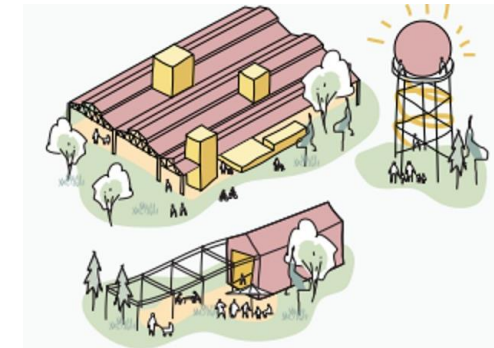
INDUSTRIAL HERITAGE PRESERVED

Buildings and structures are identified as having cultural and urban development value. For example, the cooling tower will also play a central role as a landmark in the new neighbourhood.

Protection and development of the existing identity.

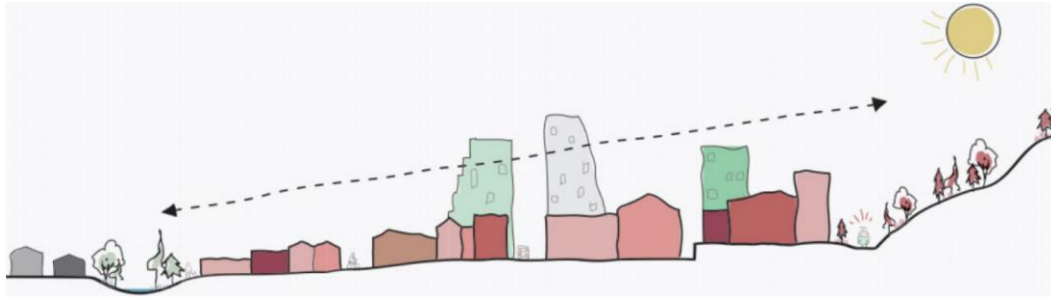


Filling old buildings with new life.



Preservation and new use of at least half of the existing buildings.

INDUSTRIAL HERITAGE AS A DRIVING FORCE FOR SUSTAINABLE SOCIAL AND ECONOMIC DEVELOPMENT



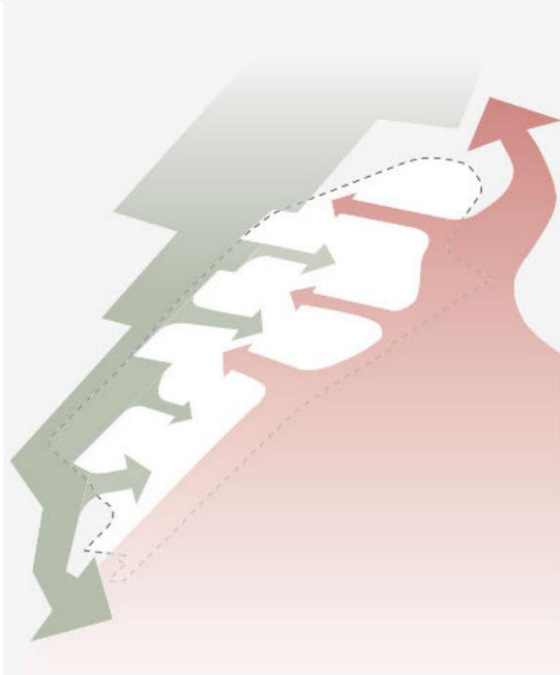
URBAN VISION

Integration into the landscape and the city.

Walkable network of healthy spaces



(ref.: AGORA @ Cobe/Urban Agency/Luxplan/Urban Creators)



[IK-CNCI]



A framework of urban nature and a network of habitats.
Green spaces: 50% will be green spaces, including green roofs.



INDUSTRIAL HERITAGE AS A DRIVING FORCE FOR SUSTAINABLE SOCIAL AND ECONOMIC DEVELOPMENT

Housing

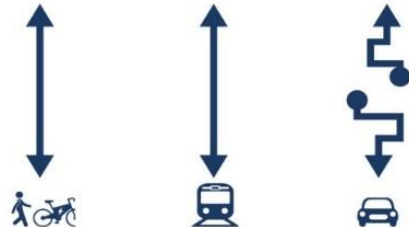
50%

At least 30% of which affordable housing

URBAN VISION



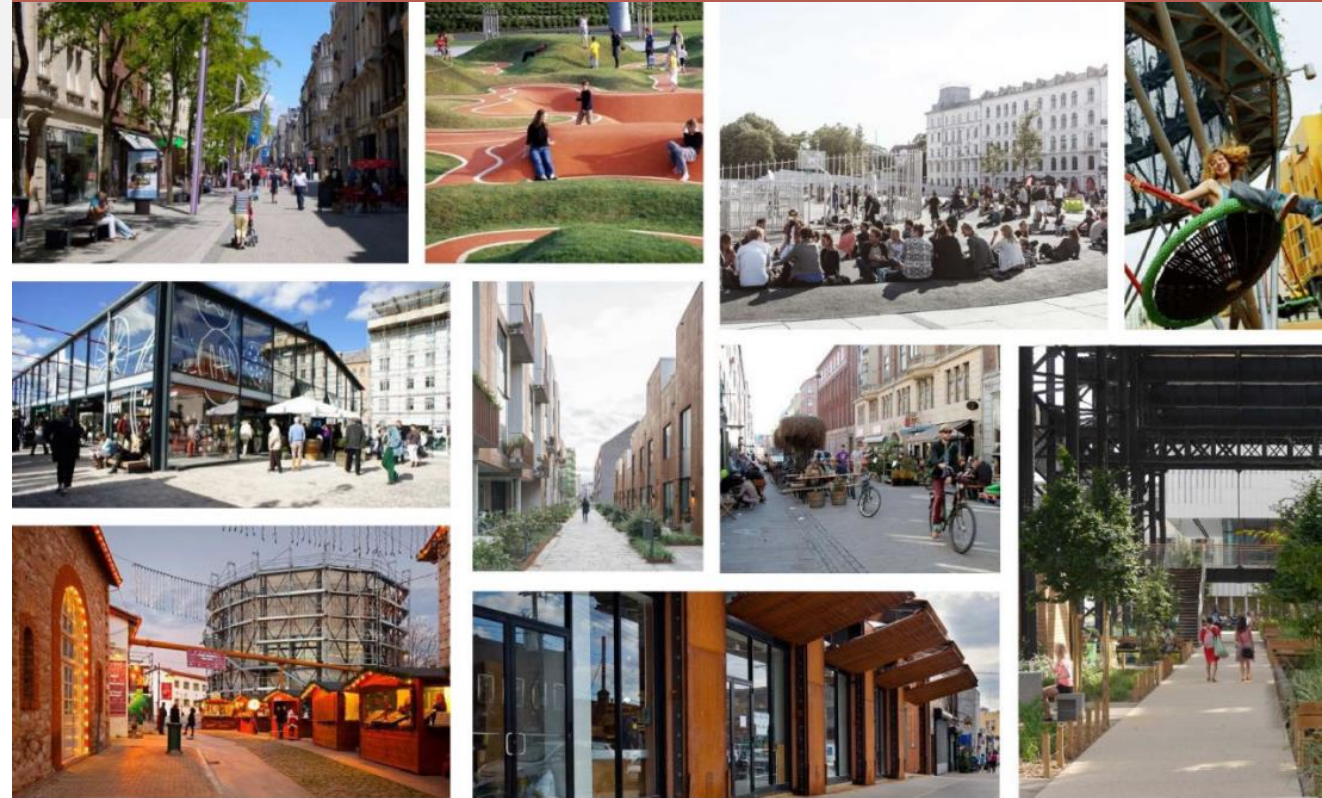
[IK-CNCI]



The project focuses on a new approach to mobility and energy efficiency, with car use kept to a minimum.

Future residents will be able to enjoy a wide range of services: sports activities, shops, leisure facilities, primary and secondary schools, day care centres.

URBAN DESIGN PRINCIPLES



(ref.: AGORA @ Cobe/Urban Agency/Luxplan/Urban Creators)

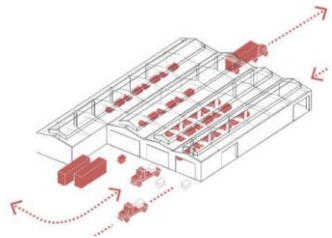
INDUSTRIAL HERITAGE AS A DRIVING FORCE FOR SUSTAINABLE SOCIAL AND ECONOMIC DEVELOPMENT

URBAN VISION

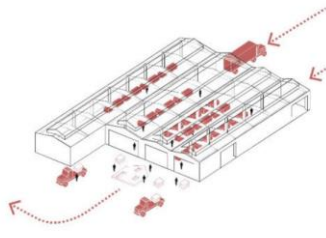
CONCEPT "StadtFabrik"

A district that is constantly being regenerated, a kind of "work in progress", building new from old.

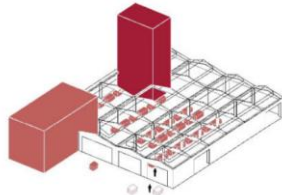
Many principles of circular economy and sustainable development have been integrated, as well as economic, social and cultural innovations.



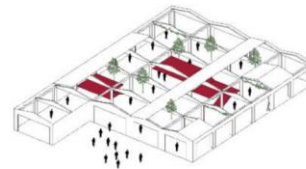
Logistical use



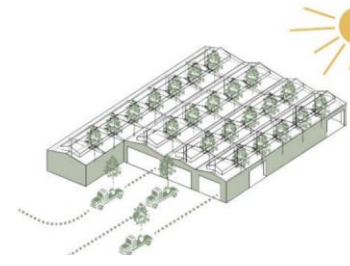
Prefab on site



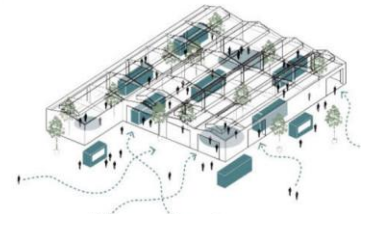
Future crafts and production



Temporary use



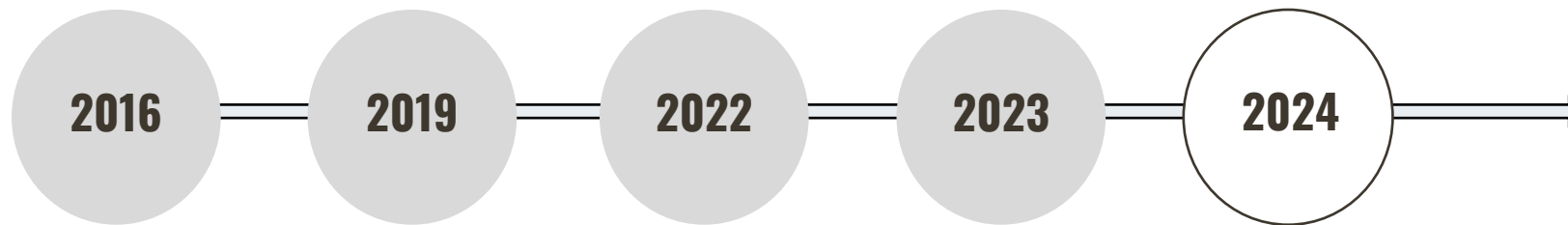
Tree nursery



Innovative office

INDUSTRIAL HERITAGE AS A DRIVING FORCE FOR SUSTAINABLE SOCIAL AND ECONOMIC DEVELOPMENT

PARTICIPATORY PROCESS WITH CITIZENS



Citizen participation events:

Pre-study
involving more
than 100 experts
from public and
private sector

Urban planning
competition

Contest for the
new name
Official Opening
(MOOD)

Fréijoersforum
Hierschforum

Children's &
Family
Festival

Urban planning workshops, public meetings with the developer, experts, affected communities and administrations, and government representatives will be organised throughout the process.

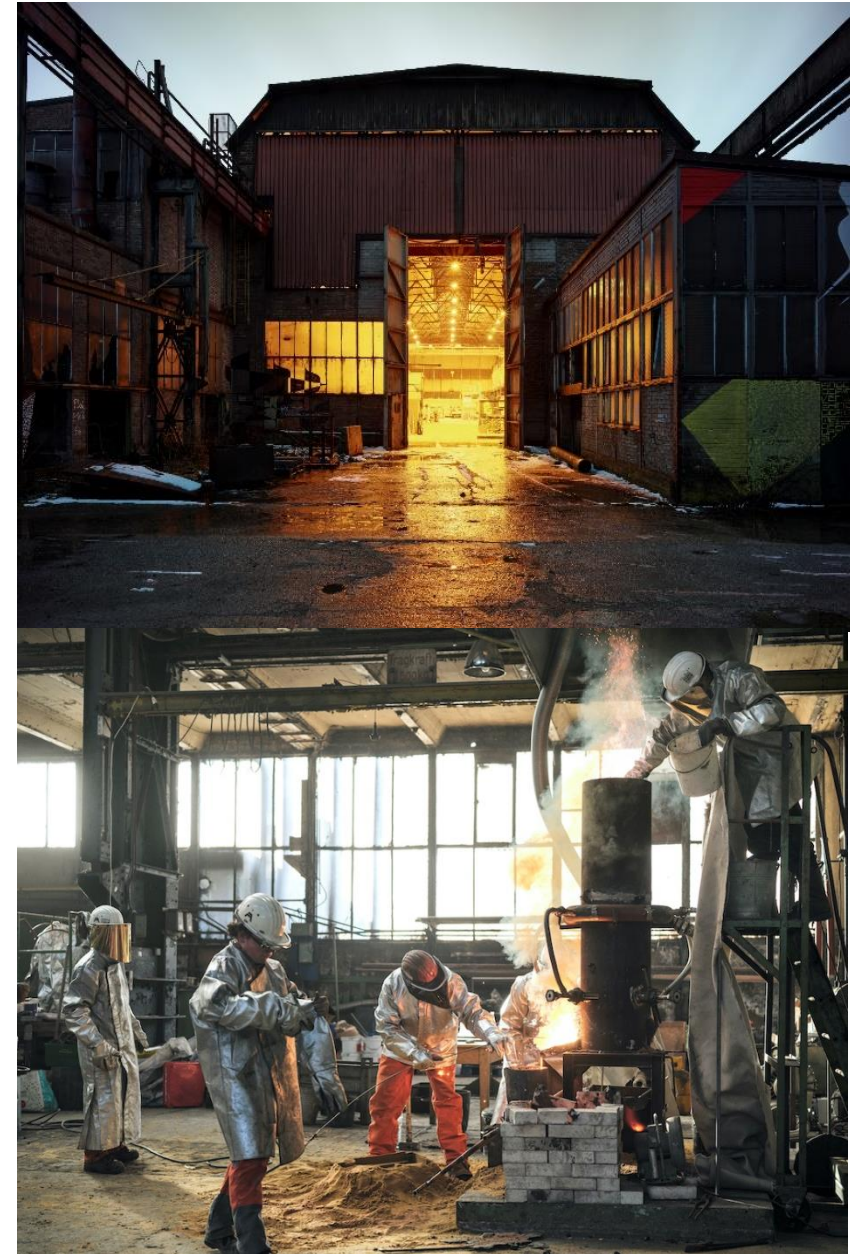
FERRO FORUM

CULTURE AND COMMUNITY

A CENTRE FOR IRON AND STEEL EXPERTISE

A passionate team of amateurs and professionals founded a non-profit association in 2019 to preserve and promote our cultural, industrial and traditional craft heritage.

Based around 3 pillars:



FerroForum: A pioneer is currently almost the only regular actor on the site and at the same time faces a precarious future.

[IK-CNCI]



CULTURE AND COMMUNITY

Encourage living together/developing and working with iron.



(photos : FERROFORUM @ Romain Girtgen)

Residential, commercial,
educational and leisure
facilities will be created.

FUTURE SITE



[IK-CNCI]

(ref.: AGORA @ Cobe/Urban Agency/Luxplan/Urban Creators)

The industrial heritage will be an integral part of the district.

[IK-CNCI]

(ref.: AGORA @ Cobe/Urban Agency/Luxplan/Urban Creators)



2028

First apartments
available.

10.000 people
will live there
in the future.

[IK-CNCI]

(ref.: AGORA @ Cobe/Urban Agency/Luxplan/Urban Creators)

INDUSTRIAL HERITAGE AS A DRIVING FORCE FOR SUSTAINABLE SOCIAL AND ECONOMIC DEVELOPMENT

NEISCHMELZ

INDUSTRIAL HERITAGE AS A DRIVING FORCE FOR SUSTAINABLE SOCIAL AND ECONOMIC DEVELOPMENT

NEISCHMELZ

With the final closure of the ArcelorMittal plant in 2005, the Neischmelz project was launched in Dudelange.

The housing fund (Fonds du logement) was appointed as the developer of the 32-hectare site.

More than half of the functions will be commercial, administrative or cultural.

Even before the district is built, temporary infrastructure and transitional activities will be implemented.

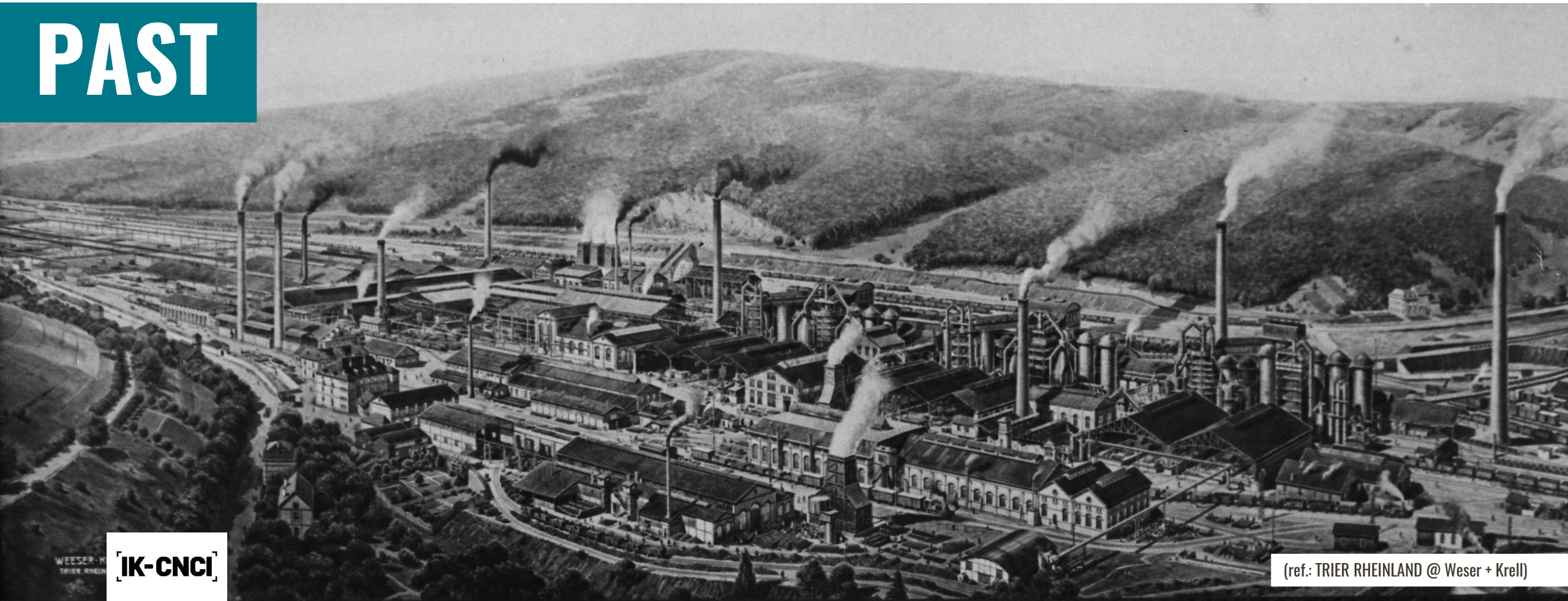
This dynamic of creative initiatives will be anchored in the new urban areas, facilitating the establishment of social and cultural life.

The new NeiSchmelz will be a carbon-neutral eco-district. From the beginning of the project, the city decided to involve the citizens.



INDUSTRIAL HERITAGE AS A DRIVING FORCE FOR SUSTAINABLE SOCIAL AND ECONOMIC DEVELOPMENT

PAST



INDUSTRIAL HERITAGE AS A DRIVING FORCE FOR SUSTAINABLE SOCIAL AND ECONOMIC DEVELOPMENT

TODAY



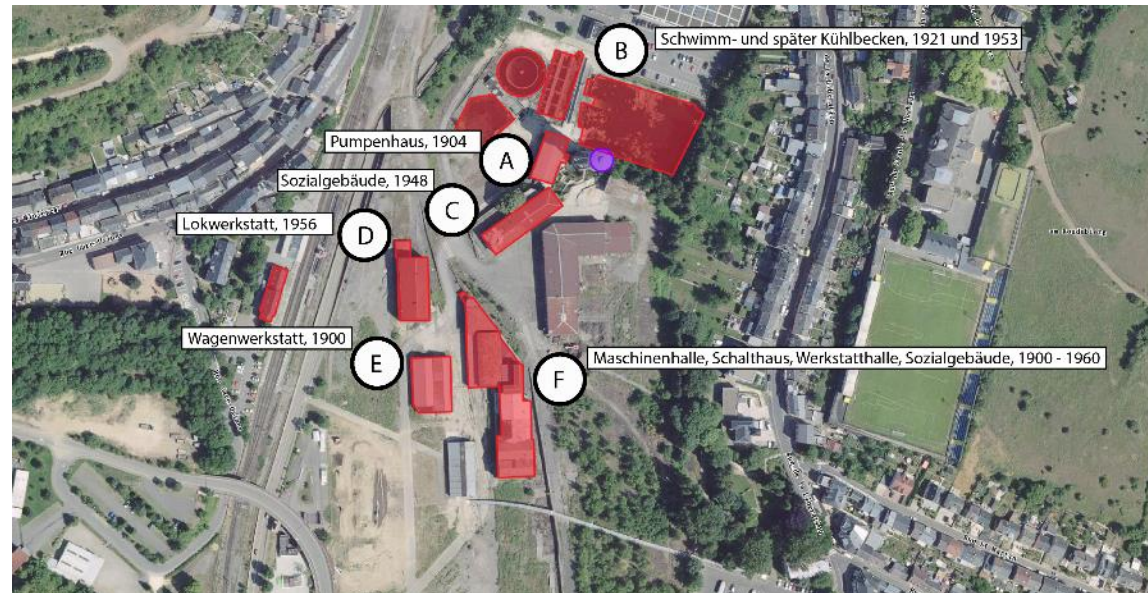
INDUSTRIAL HERITAGE AS A DRIVING FORCE FOR SUSTAINABLE SOCIAL AND ECONOMIC DEVELOPMENT

PRESERVATION

More than 10 historic buildings and elements have been preserved.

Some of these buildings have very complex operating conditions and have already been renovated in an exemplary manner.

Other buildings were used early on. Their occupants contributed to the development of a cradle of industrial culture.

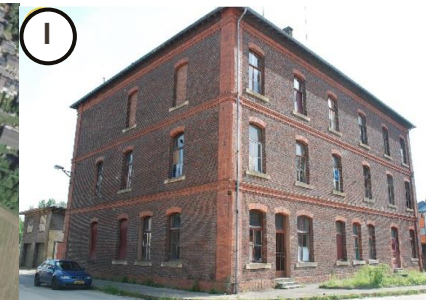
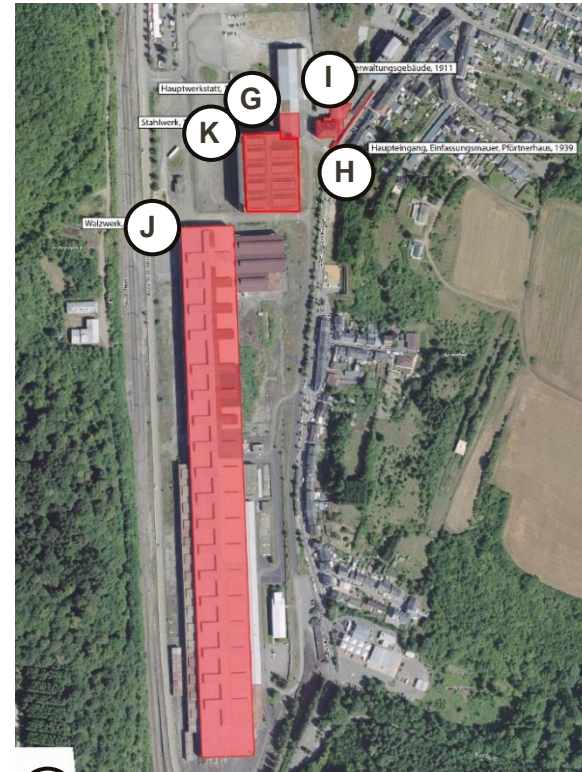


INDUSTRIAL HERITAGE AS A DRIVING FORCE FOR SUSTAINABLE SOCIAL AND ECONOMIC DEVELOPMENT

PRESERVATION

Today, more buildings are ready to be used as catalysts to breathe life into the future district.

One of the buildings will soon be converted into a 'Citizens Information Centre'.

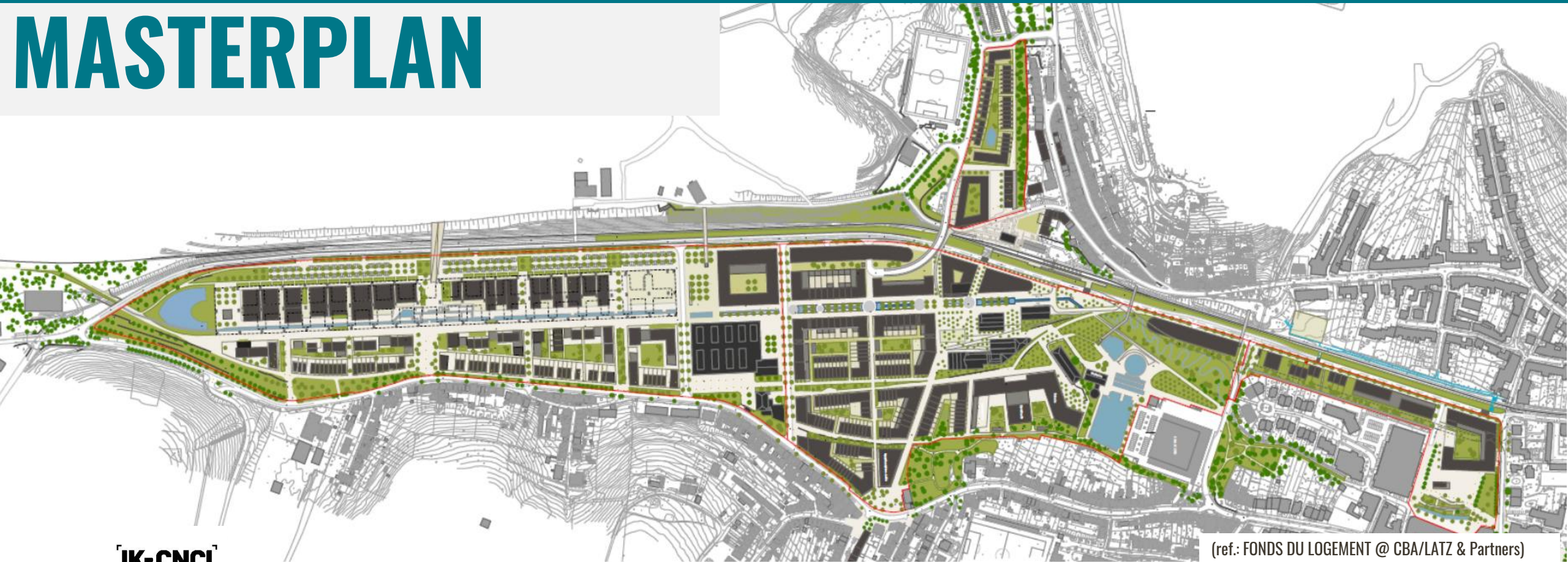


(ref.: FONDS DU LOGEMENT)

INDUSTRIAL HERITAGE AS A DRIVING FORCE FOR SUSTAINABLE SOCIAL AND ECONOMIC DEVELOPMENT

A well-connected and vibrant neighbourhood close to the city, reconnecting two neighbourhoods and nature reserves, ensuring sustainable management of its natural resources and accelerating the transition to carbon neutrality. A sensitive approach, integrated into the urban landscape and morphology, offering a high quality of life.

MASTERPLAN



INDUSTRIAL HERITAGE AS A DRIVING FORCE FOR SUSTAINABLE SOCIAL AND ECONOMIC DEVELOPMENT



Geothermal energy is planned, and studies are underway. The type of energy to be used will be decided during the process, whether solar thermal or biomass.

Circular economy and energy

URBAN VISION



CO2 NEUTRAL

People Positive



Material Positive



Energy Positive



Economy Positive



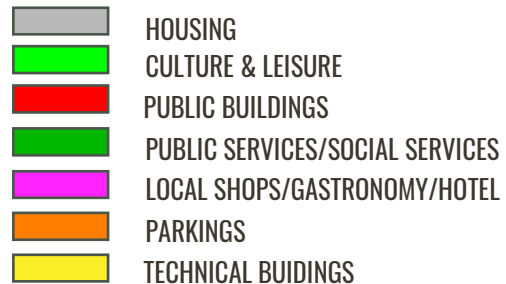
ZC

INDUSTRIAL HERITAGE AS A DRIVING FORCE FOR SUSTAINABLE SOCIAL AND ECONOMIC DEVELOPMENT

MIXED USE/FUNCTIONS

56% of the total gross floor area will be residential, with local shops, restaurants and cafes, workplaces, meeting places and leisure and entertainment facilities.

URBAN VISION

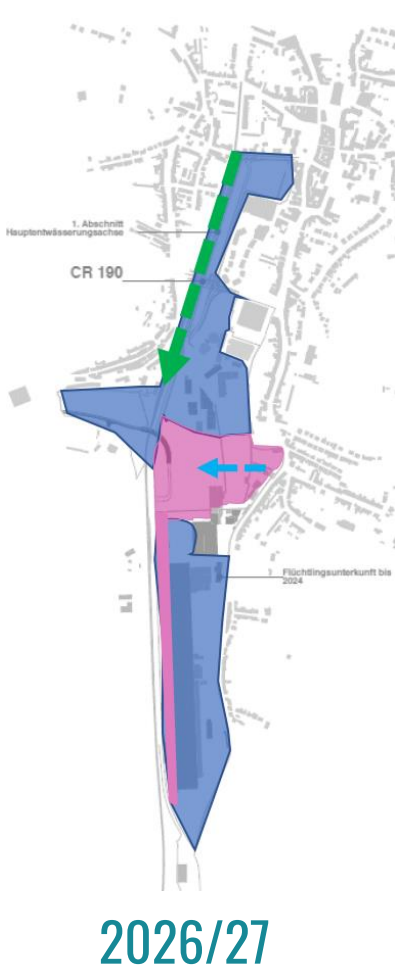


The programme has been designed to define the needs of citizens and public authorities.

INDUSTRIAL HERITAGE AS A DRIVING FORCE FOR SUSTAINABLE SOCIAL AND ECONOMIC DEVELOPMENT

TIMELINE

- STUDY
- CONSTRUCTION WORKS
- CONSTRUCTION WORKS FDL
- FINALIZED
- SITE ACCESS



(ref.: FONDS DU LOGEMENT)

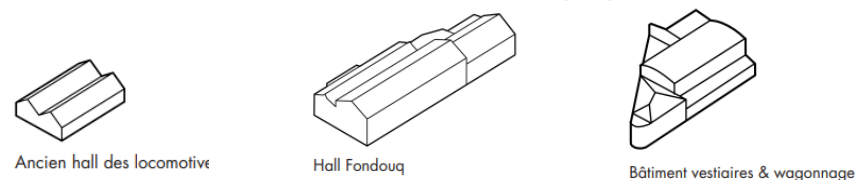
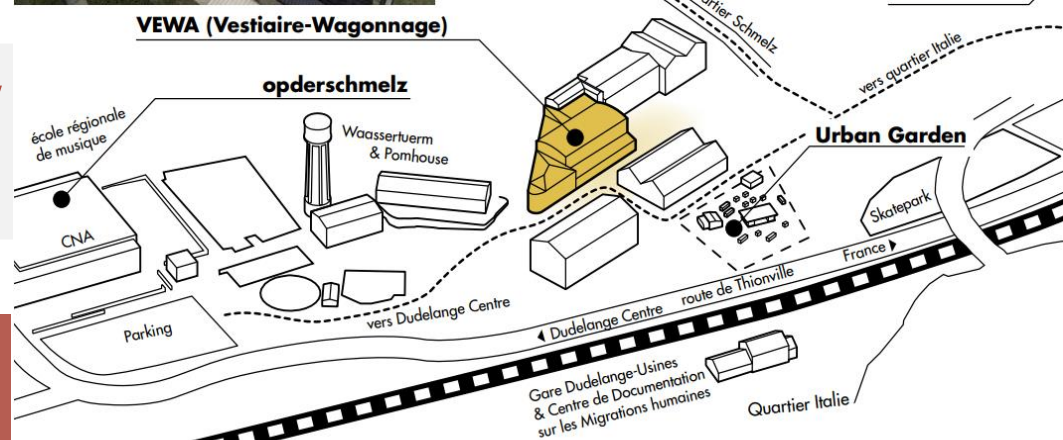
An aerial architectural rendering of a large-scale housing development. The scene shows a dense cluster of white, modern apartment buildings with flat roofs, arranged in a grid-like pattern. The development is situated in a valley, surrounded by lush green hills and fields. A winding road or path runs through the center of the development, and a small body of water is visible in the lower-left quadrant. The overall atmosphere is one of a planned, sustainable community.

2028

First apartments available.

3,600 people will live there in the future.

(ref.: FONDS DU LOGEMENT)



(ref.: VEWA)

CULTURE AND COMMUNITY

2016 →

An artists' collective as part of the Biennale of Industrial Culture

Phase "nomade"
2016
"Hall des locomotives"
2017-2022
"Hall Fondouq"

2020 - 2022

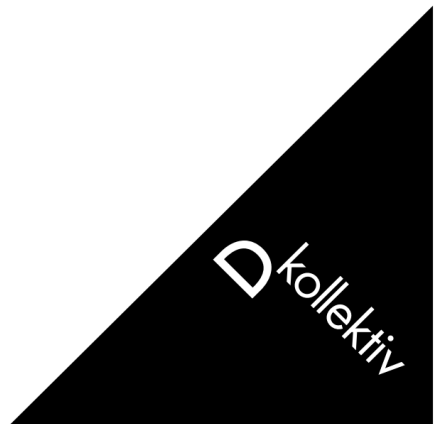
Participatory renovation initiated by the Dkolektiv

Transition phase
Fondouq Hall to the building
"vestiaire & waggonnage"

2022 →

VEWA (Vestiaire-Waggonnage) Creative Space
Fit user community (VEWA asbl) in collaboration with the city of Dudelange

Becoming established



CULTURE AND COMMUNITY

Dkollektiv is a community that has settled in the NeiSchmelz district, an artists' collective sensitive to the industrial heritage.

The NeiSchmelz project involves the relocation of the workshop to another building in order to maintain the site in the neighbourhood and as part of the "Esch 22" European Capital of Culture.

This move will lead to a participatory renovation of the "Vestiaires-Waggonage".



(ref.: @ CNCI/Maria Spada)

VEWA
espace de création

CULTURE AND COMMUNITY

VEWA is the open, cultural third place, open to creation, work, experimentation and "doing together".

Intercultural, intergenerational, participatory, with a diverse public.



(ref.: @ Ville de Dudelange - Agence standart)



Espaces du bâtiment Vestiaire-Wagonnage (VEWA)



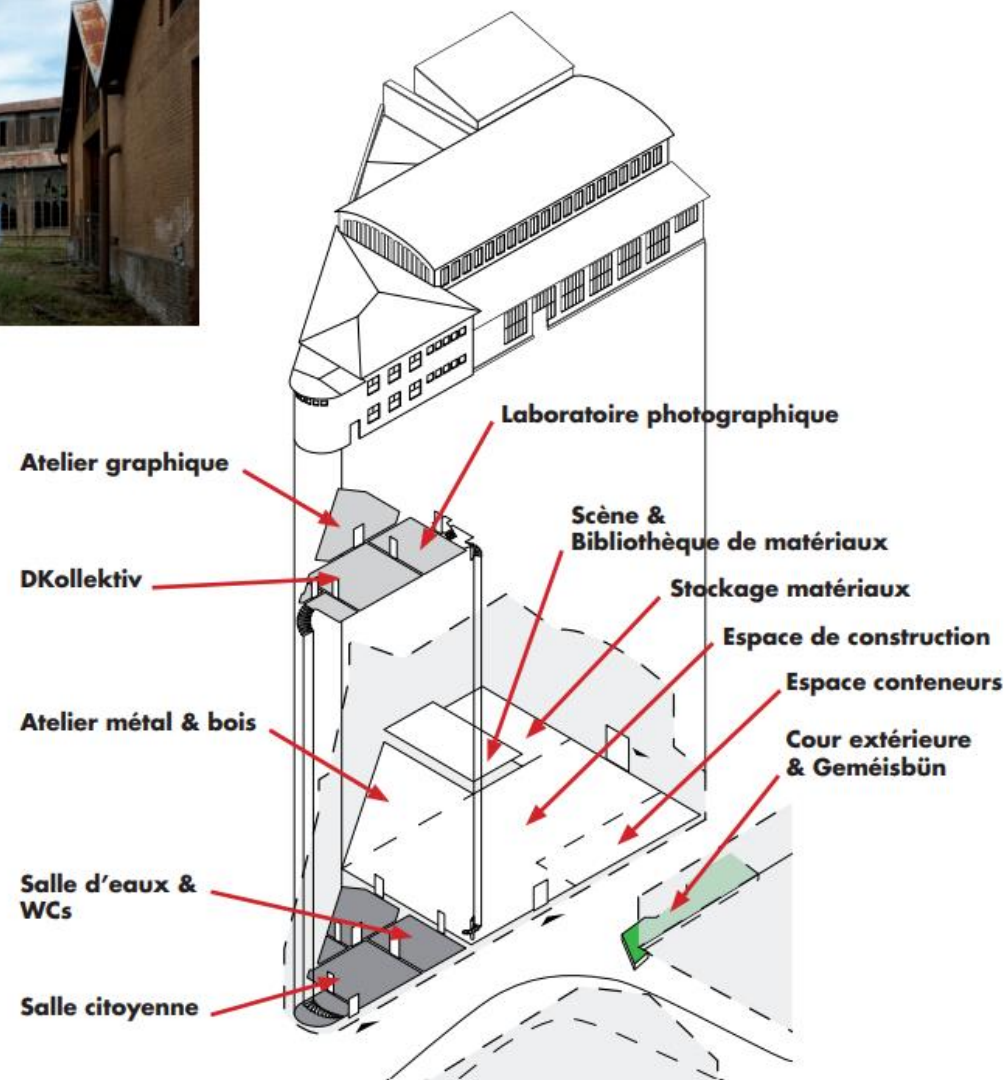
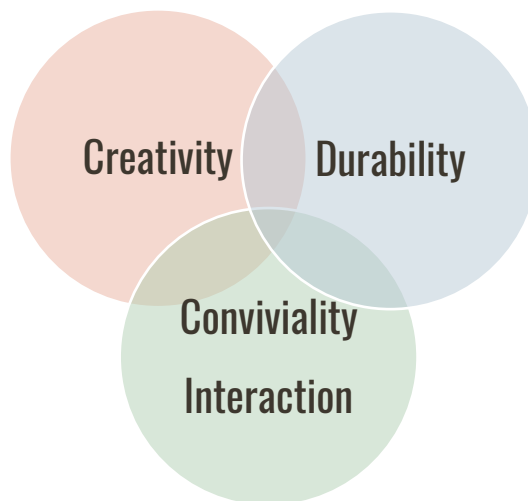
CULTURE AND COMMUNITY

5 Partners:

City of Dudelange/opderschmelz/Oeuvre de secours
G.D. Charlotte /Esch 2022 /Fonds du Logement

14 Actors:

DKollektiv/Fotoclub/CEPA/Centres d'art Dudelange/
opderschmelz/VeloDiddeleng/Transitioun Diddeleng
/Foodsharing Bësch/Dkollektiv/Croix Rouge/Jardin
Communautaire/Neischmelz/Interactions/Cercle
Artistique Dudelange



(ref.: VEWA)



CULTURE AND COMMUNITY

A friendly and calming place that welcomes all who wish to stop.





“Waassertuerm”

The landmark of the Dudelange landscape.

Open to the public since 2012, this is a fine example of heritage conservation and enhancement.

Exceptionally protected 'ensembles' challenge creative use:

CULTURE AND COMMUNITY



“Floater”

One of the 11 unusual lodgings created as part of Esch2022 - European Capital of Culture - on the "Minett Trail"



The first overnight lodging in the new district.

Social and cultural life:

CULTURE AND COMMUNITY

Microbrewery /Urban Garden/ Festivals /Expositions/...



[IK-CNCI]



(ref. @ Ville de Dudelange - Agence standart/CNCI/FDL)

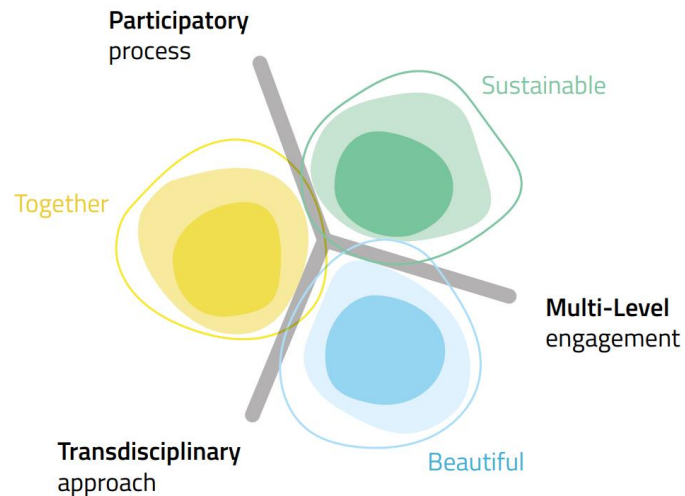
INDUSTRIAL HERITAGE AS A DRIVING FORCE FOR SUSTAINABLE SOCIAL AND ECONOMIC DEVELOPMENT

The concept is to include and link all processes as shown:

NEW EUROPEAN BAUHAUS

MULTI-LEVEL ENGAGEMENT/TRANSDISCIPLINARY APPROACH/PARTICIPATORY PROCESS

(ref.: NEB Compass References)



INDUSTRIAL HERITAGE AS A DRIVING FORCE FOR SUSTAINABLE SOCIAL AND ECONOMIC DEVELOPMENT

THANK YOU