

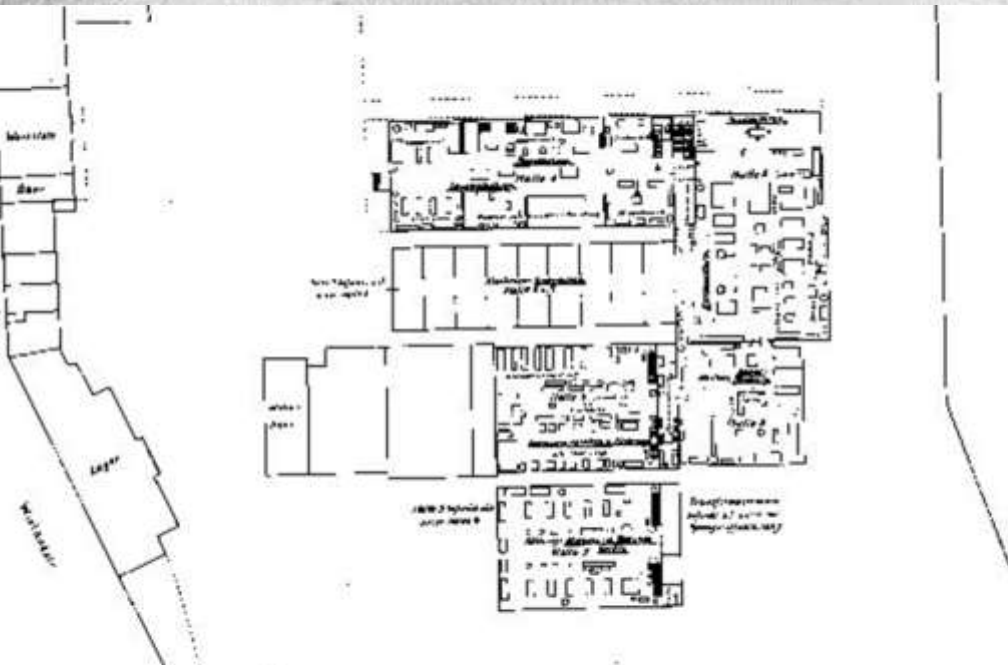
Industrial Heritage Tourism at the German Mining Museum

ERIH Conference 2013
Measuring the benefits of
industrial heritage tourism

Stefan Niederhagemann



Industrial Heritage Tourism at the German Mining Museum



Industrial Heritage Tourism at the German Mining Museum





Industrial Heritage Tourism at the German Mining Museum



Dortmund 1944



Bochum 1973



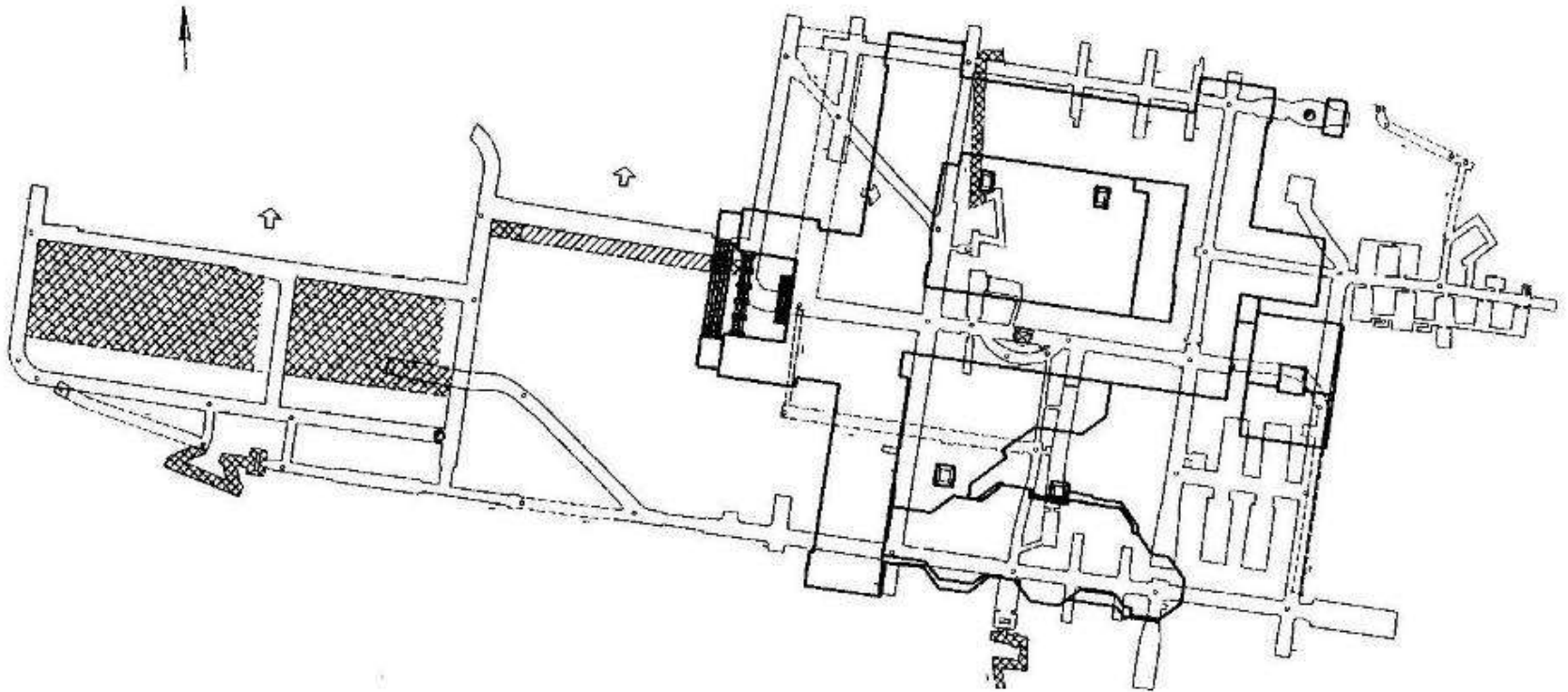
Industrial Heritage Tourism at the German Mining Museum



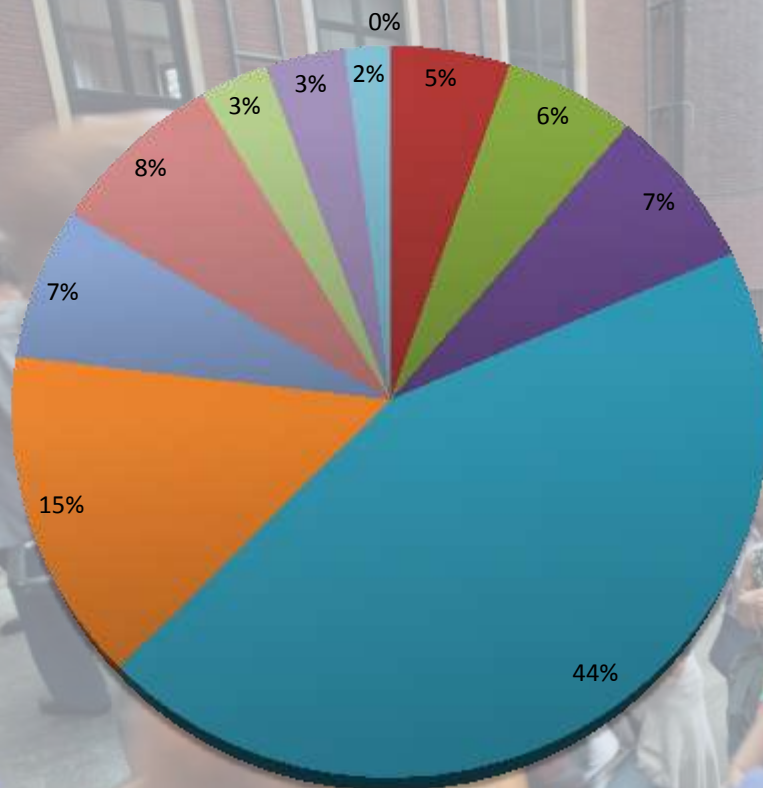
Industrial Heritage Tourism at the German Mining Museum



Industrial Heritage Tourism at the German Mining Museum



Where do the visitors come from?



postcode

0

1

2

3

4

5

6

7

8

9

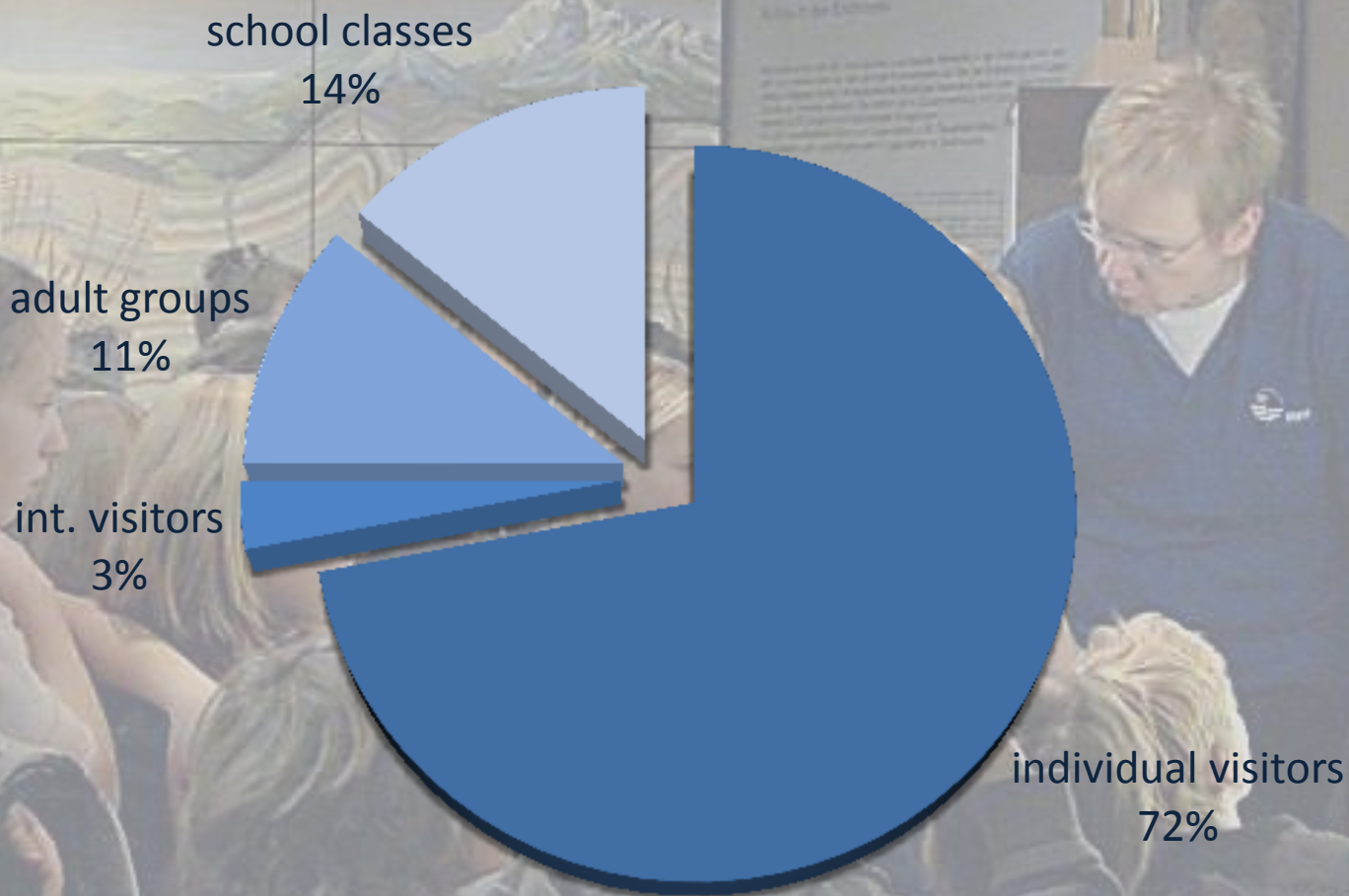
Niederlande, Weißrussland, Dänemark,
Tschechien, Frankreich, Schweiz

ascertainment

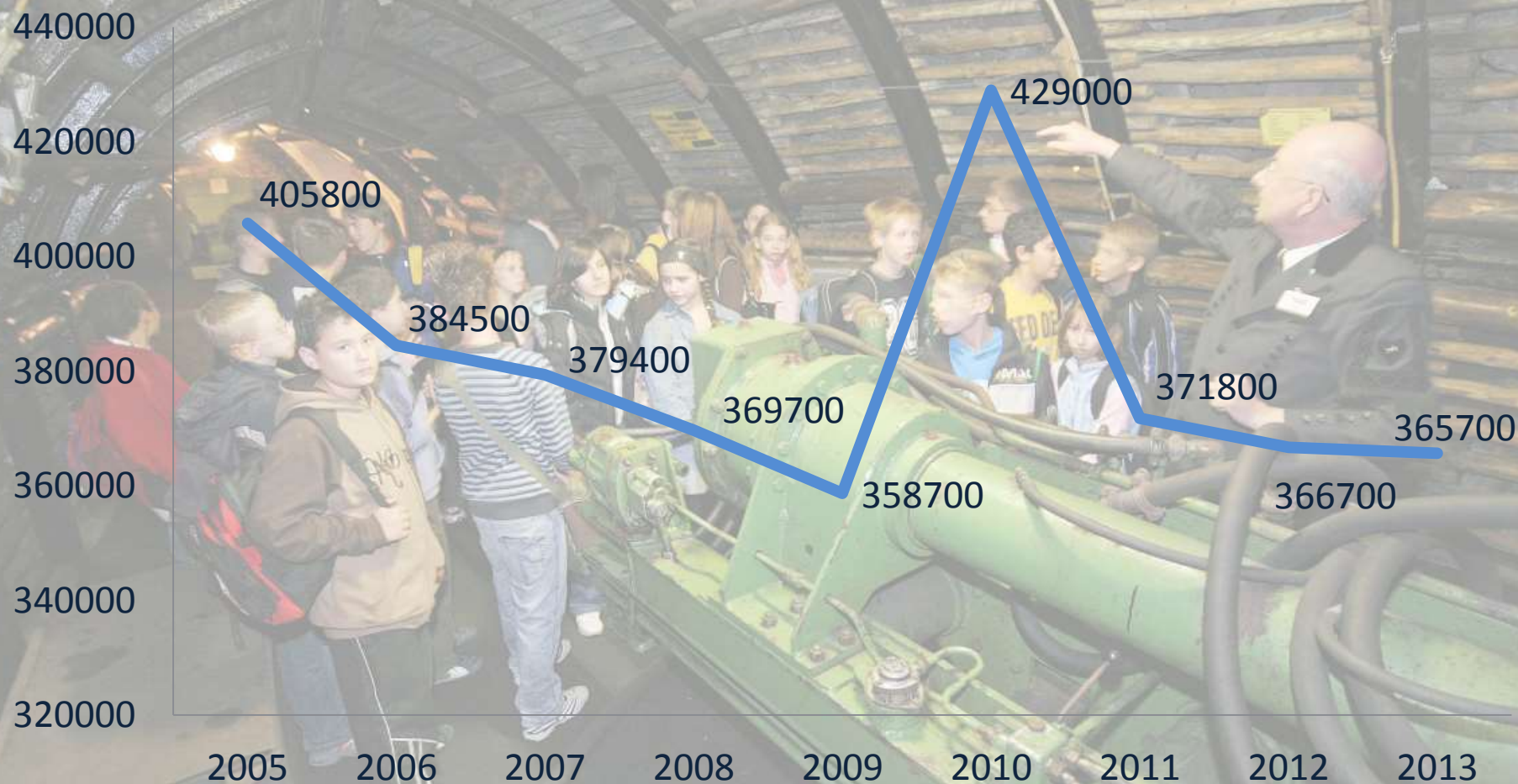
1998-99	inquiry of postcodes
2002	interviews by students of the geographical institute of Ruhr-University Bochum
2003	interviews by students
since 2002/03	interviews by own staff
2005	interviews during special exhibition „Persiens antike Pracht. Bergbau – Handwerk – Archäologie“
2006	interviews during special exhibition „Das Schiff von Uluburun – Welthandel vor 3000 Jahren“
2011/12	interviews during special exhibition „Schätze der Anden – Chiles Kupfer für die Welt“
2013	interviews by Görjen & Köller

Picture: DBM/LICHTBLICK

Who is visiting the museum?



How many visitors are coming?



Bochum. Kulturhauptstadt 2010



DEUTSCHES BERGBAU-MUSEUM





Industrial Heritage Tourism at the German Mining Museum

route · industriekultur ·

Industrial Heritage Trail

Anchor Points
• These are major venues where you can pick up information

Anchor points with a visitor centre
• offer comprehensive information

Significant housing settlements
• The Ruhrgebiet at home

The many housing settlements reveal a lot about the social history of the Ruhrgebiet and the development of present day urban architecture. Here you can get an authentic insight into the life of the region.

- S 1 Flöz Dickebank, Gelsenkirchen
- S 2 Dahlhauser heath, Bochum
- S 3 Teutoburgia, Herne
- S 4 The old housing colony in Dortmund-Eving
- S 5 Ziethenstraße, Lünen
- S 6 Lange Riege, Hagen
- S 7 Altenhof II, Essen
- S 8 Margarethenhöhe, Essen
- S 9 Rheinpreußen, Duisburg
- S 10 The old Friedrich-Heinrich settlement in Kamp-Lintfort
- S 11 Eisenheim, Oberhausen
- S 12 Wilhelm Garden Suburb, Bottrop
- S 13 Schüngelberg, Gelsenkirchen

Industrial panorama points
• offer you an overview

The region's outstanding viewing points are a particular attraction for tourists. Here you can look down over typical industrial landscapes. Some of these panorama points have been embellished with huge sculptures and other landmark art installations.

- P 1 Rheinelbe tip, Gelsenkirchen
- P 2 Hoheward/Hoppenbruch tips, Herten
- P 3 Schwerin tip, Castrup-Rauxel
- P 4 Großes Holz (Large wood) tip, Bergkamen
- P 5 Kissinger Heights, Hamm
- P 6 'Florian' television tower, Dortmund, in the Westfalenpark
- P 7 Hohensyburg, Dortmund
- P 8 Berger memorial on the Hohenstein, Witten
- P 9 Rheinpreußen tip, Moers
- P 10 Pattberg tip, Moers
- P 11 Alsum hill, Duisburg
- P 12 Haniel tip, Bottrop
- P 13 The Tetrahedron, Bottrop

[illegible]

See you again in the German Mining Museum

Stefan Niederhagemann

DEUTSCHES
BERGBAU
MUSEUM
BOCHUM
DBM

